



*green*  
INFRASTRUCTURE

---

Collaborating  
with Nature

# LATORNELL

CONSERVATION SYMPOSIUM

**NOVEMBER 15-17, 2016**

NOTTAWASAGA INN RESORT & CONFERENCE CENTRE

**2016 PROGRAM**



UNIVERSITY  
of GUELPH

# LATORNELL 2016

## SYMPOSIUM MANAGEMENT

Chair: **Lisa Turnbull**, Toronto and Region Conservation  
Vice Chair: **Sean Watt**, Cataraqui Region Conservation Authority  
Symposium Co-Coordinator & Registrar: **Karen Anderson**, Allset Inc.  
Symposium Co-Coordinator & Website Coordinator: **Mario Maillet**, Allset Inc.  
Secretary: **Sara Epp**, University of Guelph  
Finance: **Jane Dunning**, Conservation Ontario  
Hotel and Facilities Coordinator: **Barbara MacKenzie-Wynia**, Ontario Nature  
Ex-Officio: **Kim Gavine**, Conservation Ontario  
**Dr. Stewart Hilts**, University of Guelph

## STEERING COMMITTEE

<b>Andee Pelan</b> Lake Simcoe Region Conservation Authority	<b>Jessica Isaac</b> Environmental Commissioner of Ontario
<b>Bill Trenouth</b> Credit Valley Conservation / Soil and Water Conservation Society	<b>Katie Jane Harris</b> Conservation Halton
<b>Dallas Cundick</b> St. Clair Region Conservation Authority	<b>Kendrick Doll</b> Ontario Heritage Trust
<b>Deborah Martin-Downs</b> Credit Valley Conservation	<b>Loretta Ryan</b> Ontario Professional Planners Institute
<b>Favelle Maschke</b> Ministry of Natural Resources and Forestry	<b>Michelle Sawka</b> Toronto and Region Conservation / Green Infrastructure Ontario
<b>Freyja Whitten</b> Credit Valley Conservation	<b>Dr. Robert Corry</b> University of Guelph
<b>Jane Lewington</b> Conservation Ontario	<b>Scott Peck</b> Hamilton Conservation Authority
<b>Janet Ivey</b> Grand River Conservation Authority	<b>Tanya Kampher Martin</b> Regional Municipality of York
<b>Jayne Hughes</b> Kawartha Conservation	

## SYMPOSIUM PARTNERS



# WELCOME: CHAIR'S MESSAGE



As Chair of the 23<sup>rd</sup> annual Latornell Conservation Symposium, I would like to welcome all of our delegates, speakers, sponsors and exhibitors to this year's event - *Green Infrastructure: Collaborating with Nature*.

When our Steering Committee landed on the theme for the 2016 Symposium we felt we needed to take extra care in crafting the description that accompanied the tagline. Green Infrastructure is often still viewed only as a 'nice to have' addition to planned development undertaken in urban environments. What is sometimes lost is that Green Infrastructure includes living systems such as natural areas, forests, parks, streams and riparian zones, wetlands and agricultural lands, in addition to engineered facilities such as green roofs, rain gardens and stormwater ponds.

We are hopeful that this year's Symposium can play a role in helping to continue to broaden the collective definition of Green Infrastructure and the understanding of its ability to support the environment, the economy, and our quality of life in a variety of ways. Our plenary, breakout sessions, workshops and tours will showcase how Green Infrastructure can be implemented at multiple scales including regional networks of open spaces, agricultural lands, natural areas, and through site-specific practices.

As with every year, the Symposium program is packed with opportunities for delegates to gain new information, inspiration, and contacts. I can guarantee you that your schedule will be busy for the next three days and your mind will be full! I want to remind everyone to not forget to make time to attend the planned social events like the Wine and Cheese in our Exhibitors' Galleries on Day 1 or the Gala Dinner and Dream Auction on Day 2—they're a great opportunity to connect with people in a more relaxed setting.

With this being my final year as the Chair, I would like to express how much of an honour it has been to work with such a dedicated Steering Committee. It has been a transitional year as we said goodbye to some of our long standing members and welcomed new ones. Despite the change in faces around the table our goal has remained the same - to provide delegates with the highest quality program and an overall enjoyable experience. I think you will agree that the Committee has hit this mark again this year.

In addition to the Steering Committee members I would like to recognize all of the sponsors, exhibitors, volunteers and their organizations that have devoted countless hours and resources to make this event so successful.

A handwritten signature in black ink that reads "Lisa Turnbull". The signature is fluid and cursive, with the first letters of the first and last names being capitalized and prominent.

**Lisa Turnbull**

Chair, 2016 Latornell Conservation Symposium

# LATORNELL CONSERVATION SYMPOSIUM

## GREEN INFRASTRUCTURE: COLLABORATING WITH NATURE

Welcome to the 23<sup>rd</sup> annual Latornell Conservation Symposium co-hosted by Conservation Ontario and the University of Guelph. This event provides a forum for practitioners, policy makers, nongovernment organizations, academics and businesses to network and discuss the challenges and opportunities in Ontario's conservation field.

This year's Symposium will showcase green infrastructure, and identify how it is supported, protected, and enhanced in our watersheds. Delegates will explore its applicability and benefits in relation to important issues in Ontario such as climate change, biodiversity loss, water management, economic development, improving public health, and fostering sustainable communities.



## ARTHUR D. LATORNELL



The namesake of the Latornell Conservation Symposium is Arthur D. Latornell, a pioneer and leader in the development of Ontario's conservation sector. A forward thinking and dedicated conservationist, Art Latornell had a long career in Planning and Development at the Ontario Ministry of Natural Resources. Art was associated with the Federation of Ontario Naturalists, and he was the president of the Ontario Soil and Water Conservation Society (Ontario Chapter).

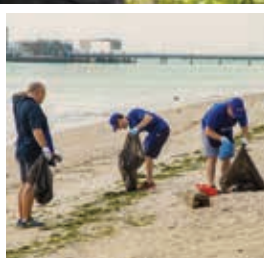
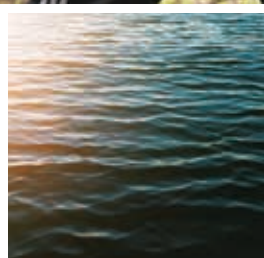
Art was a strong supporter of Conservation Authorities and a mentor to many young conservation professionals.

The University of Guelph manages the A.D. Latornell Endowment Fund and provided a contribution to the 2016 Latornell Conservation Symposium.

## LATORNELL LOGO



The Latornell Conservation Symposium logo uses an ancient tree symbol which represents the conservation of our natural resources. The trunk contains the profile of two people – a young conservation professional and a mentor, representing the important role for experienced conservationists to assist in the development of younger conservationists.



## When it comes to our communities, we like getting our hands dirty. And our feet wet.

The best way to support a community is to get involved in it. Every year, our employees around the world pitch in to protect their local water by cleaning up, planting some greenery and learning about water through RBC Blue Water Makeovers. It's all part of the RBC Blue Water Project®, which has supported over 700 charitable organizations so far and is our commitment to help protect water. When it comes to clean water, Someday™ can't come soon enough.

**Let's make Someday happen.**



# 2016 PROGRAM AT A GLANCE - DAY 1

## DAY ONE - TUESDAY, NOVEMBER 15

8:00 AM - 9:30 AM	<b>Registration</b> Refreshments – provided in the Conservation Dome
9:30 AM - 10:45 AM	<b>Welcome, Introductions and Opening Remarks</b> » <b>Lisa Turnbull</b> , Symposium Chair and Master of Ceremonies » <b>Dick Hibma</b> , Chair of Conservation Ontario » Keynote Speaker <b>Dr. Faisal Moola</b> , Director General, Ontario and Northern Canada, David Suzuki Foundation
11:00 AM - 12:30 PM	<b>Concurrent Sessions</b> » <b>T1A:</b> How Much is Too Much? Cumulative Effects of Headwater Stream Loss » <b>T1B:</b> Greener Roads and Highways » <b>T1C:</b> Design and Placemaking Destinations Using Green Infrastructure » <b>T1D:</b> The Only Constant is Change » <b>T1E:</b> Social Marketing Around the Home and in the Community » <b>T1F:</b> Showcasing Success: Supporting Dynamic Flows Using LID
12:30 PM - 1:45 PM	<b>Luncheon</b> » Keynote Speaker <b>Dr. Dianne Saxe</b> , Environmental Commissioner of Ontario » Latornell Leadership Awards Presentation with Master of Ceremonies <b>Tom Prout</b>
2:00 PM - 3:30 PM	<b>Concurrent Sessions</b> » <b>T2A:</b> Au Naturel: Storm Water Management Ponds and Reclaimed Lands » <b>T2B:</b> Protecting Species at Risk » <b>T2C:</b> Land Securement - Green Infrastructure at the Landscape Scale » <b>T2D:</b> Stewardship Beneath Your Feet » <b>T2E:</b> The Midst of a Digital Revolution » <b>T2F:</b> Soaking It In: RainScaping to Restore Watershed Hydrology
3:30 PM - 4:00 PM	<b>Refreshment Break with Exhibitors</b>
4:00 PM - 5:30 PM	<b>Concurrent Sessions</b> » <b>T3A:</b> A Balancing Act: The Wetland Water Balance Project » <b>T3B:</b> Species at Risk Stewardship Fund: Celebrating 10 Years! » <b>T3C:</b> Public Spaces: Crowded Places » <b>T3D:</b> I Don't Know What I Don't Know - Open Source Data Sets » <b>T3E:</b> Decoding Your Audience » <b>T3F:</b> End of the Line for End of Pipe? Comparing Conventional and Low Impact SWM Approaches
5:30 PM - 7:00 PM	<b>Exhibitor Galleries Wine &amp; Cheese / Live Animal Exhibit (Gallery B)</b>
7:00 PM - 8:30 PM	<b>Harvest Banquet Dinner</b> <b>Soil and Water Conservation Society (SWCS) A.D. Latornell Award of Merit Presentations</b>
8:15 PM - 8:30 PM	<b>Wine + Craft Beer Prize Ticket Sale and Draw in the Conservation Dome</b>
Approximate 8:30 PM start time	<b>Choose Your Own Adventure Social Events</b> (see pages 21 & 22) » Great Grapes: Discover the Wines of Ontario » Sounds Familiar Music Trivia Contest » Jungle Quest Team Mini Golf Tournament » Continue to Mix and Mingle in the Exhibit Galleries & GIO Green Space
9:00 PM - 1:00 AM	<b>Latornell After Party (LAP) in Startite Lounge</b> (see page 22)

**The following events take place in the Conservation Dome on Tuesday & Wednesday:** Morning Refreshments (Tuesday only), Welcome and Introductions, all Plenary Sessions and Keynote presentations, Lunches and Dinners, Leadership Awards Ceremony, Young Conservation Professional (YCP) Graduation, Student Poster Display and Competition, Dream Auction, Gala Banquet, Gala Evening Entertainment

# 2016 PROGRAM AT A GLANCE - DAY 2

## DAY TWO - WEDNESDAY, NOVEMBER 16

7:00 AM - 8:30 AM	<p><b>Registration</b></p> <p>Refreshments – provided on Convention Level (lower level)</p>
8:30 AM - 10:00 AM	<p><b>Concurrent Sessions</b></p> <ul style="list-style-type: none"> <li>» <b>W1A:</b> Water and Wastewater Systems: Managing Today's Issues</li> <li>» <b>W1B:</b> Natural Infrastructure in the Big Picture: On-ground Options for a Green and Healthy Future in Canada's Deep South</li> <li>» <b>W1C:</b> Restoration isn't Easy; But the Pay-off is Big!</li> <li>» <b>W1D:</b> New Initiatives – Highlights from the Sub-watershed Project</li> <li>» <b>W1E:</b> What Resonates with Governments</li> <li>» <b>W1F:</b> Making It Work: Plans, Guidance and Approaches for Getting LID into the Ground</li> <li>» <b>W1G:</b> Stormwater Fees</li> </ul>
10:00 AM - 10:30 AM	<p><b>Refreshment Break with Exhibitors</b></p>
10:30 AM - 12:00 Noon	<p><b>Concurrent Sessions</b></p> <ul style="list-style-type: none"> <li>» <b>W2A:</b> The One Water Approach: Framework for the Integrated Management of All Water Systems</li> <li>» <b>W2B:</b> Biodiversity Matters! The Role of Biodiversity in Attenuating Flood Risk</li> <li>» <b>W2C:</b> Engaging Citizens and Homeowners to Take Actions to Enhance Our Natural Systems</li> <li>» <b>W2D:</b> Using Land as a Means of Stewardship</li> <li>» <b>W2E:</b> Building Green Infrastructure Communities</li> <li>» <b>W2F:</b> Multifunctional Rural Infrastructure for Multifaceted Needs</li> <li>» <b>W2G:</b> Green Asset Management</li> </ul>
12:00 Noon - 1:45 PM	<p><b>Luncheon</b></p> <ul style="list-style-type: none"> <li>» Young Conservation Professionals (YCP) Leadership Program Graduation Ceremony</li> <li>» Keynote Speaker <b>Brent Toderian</b>, Founder and Principal, Toderian Urban Works</li> </ul>
2:00 PM - 3:30 PM or 5:00 PM	<p><b>Concurrent Sessions / Workshops / Tours</b></p> <ul style="list-style-type: none"> <li>» <b>W3A:</b> Tour of City of Barrie's Surface Water Treatment Plant and Wastewater Treatment Plant [meet in hotel front lobby]</li> <li>» <b>W3B: Part 1:</b> Hitting Ontario's Targets: Visualizing Success for Natural Heritage and Protected Areas <b>[2:00 PM - 3:30 PM]</b></li> <li>» <b>W3C:</b> Stewardship Strategies for Green Infrastructure</li> <li>» <b>W3D:</b> Innovative Farmers Panel</li> <li>» <b>W3E:</b> Marketing Science - Environmental Visual Communication</li> <li>» <b>W3F:</b> Strategies and Tools for Building Green Infrastructure Today</li> <li>» <b>W3G:</b> Valuing Ecosystem Services <b>[2:00 PM - 3:30 PM]</b></li> <li>» <b>W3H:</b> Rethinking Career Development: Stories and Lessons Learned from Green Professionals</li> </ul>
3:30 PM - 5:00 PM	<p><b>Concurrent Sessions / Workshops</b></p> <ul style="list-style-type: none"> <li>» <b>W3B: Part 2:</b> Hitting Ontario's Targets: Visualizing Success for Natural Heritage and Protected Areas (Ontario Biodiversity Strategy)</li> <li>» <b>W4G:</b> Socioeconomics of Parks, Trails &amp; Natural Heritage</li> </ul>
4:00 PM - 4:30 PM	<p><b>Refreshment Break with Exhibitors</b></p>
4:30 PM - 6:30 PM	<p><b>Student Poster Display and Competition</b></p>
4:30 PM - 8:00 PM	<p><b>Dream Auction</b></p>
6:30 PM - 9:30 PM	<p><b>Gala Banquet &amp; Entertainment</b></p>
10:00 PM - 1:00 AM	<p><b>Latornell After Party (LAP) in Starlite Lounge</b></p>

# 2016 PROGRAM AT A GLANCE - DAY 3

## DAY THREE - THURSDAY, NOVEMBER 17

<b>7:00 AM - 8:30 AM</b>	<b>Registration</b> Refreshments – provided on Convention Level (lower level)
<b>8:30 AM - 10:00 AM</b>	<b>Concurrent Sessions / Tours</b> <ul style="list-style-type: none"> <li>» <b>TH1A:</b> How Great are the Lakes? Improving Water Quality Monitoring, Modeling and Assessment</li> <li>» <b>TH1B:</b> Lessons from Ontario's UNESCO Biosphere Reserves</li> <li>» <b>TH1C:</b> Work Smarter, Not Harder: Tools of Stewardship</li> <li>» <b>TH1D:</b> Tour - Sustainability at York Region's Bill Fisch Forest Stewardship and Education Centre (meet in hotel front lobby for bus boarding by 8:15 AM- Bus leaves at 8:30 AM and returns at 1:00 PM)</li> <li>» <b>TH1E:</b> Ecohealth Policy Toolkit</li> <li>» <b>TH1F:</b> Stormwater Management in Rural Watersheds - Challenges and Solutions</li> </ul>
<b>10:00 AM - 10:30 AM</b>	<b>Refreshment Break with the Exhibitors</b>
<b>10:30 AM - 12:00 Noon</b>	<b>Concurrent Sessions / Tours</b> <ul style="list-style-type: none"> <li>» <b>TH2A:</b> The River's Rising: Monitoring, Mapping and Flood Control</li> <li>» <b>TH2B:</b> Natural Heritage System Tools and Planning</li> <li>» <b>TH2C:</b> Low Cost/Low Tech: Solutions for Farm Water Runoff</li> <li>» <b>TH2D:</b> Tour - Sustainability at York Region's Bill Fisch Forest Stewardship and Education Centre [Continuation of TH1D]</li> <li>» <b>TH2E:</b> Using Green Infrastructure to Battle Skin Cancer</li> <li>» <b>TH2F:</b> Adapting Communities to a Changing Climate</li> </ul>
<b>12:00 Noon - 1:00 PM</b>	<b>Networking Luncheon</b>
<b>1:15 PM - 2:45 PM</b>	<b>Concurrent Sessions / Tours</b> <ul style="list-style-type: none"> <li>» <b>TH3A:</b> Managing Expectations: Balancing Perceptions, Risks, and Costs in Modified Rivers</li> <li>» <b>TH3B:</b> Urban Forests</li> <li>» <b>TH3C:</b> Agricultural BMPs: It's Not the Science; It's the Sociology</li> <li>» <b>TH3D:</b> Tour - Being Green at the Nottawasaga Inn (Meet in Room 11)</li> <li>» <b>TH3E:</b> Health and Wellness Through Nature</li> <li>» <b>TH3F:</b> Building Green Infrastructure to Beat Climate Change</li> </ul>
<b>3:00 PM - 4:30 PM</b>	<ul style="list-style-type: none"> <li>» Keynote Speaker <b>Dr. Avi Friedman</b>, Professor, School of Architecture, McGill University</li> <li>» Wrap up</li> </ul>

The following events take place in the Conservation Dome on Thursday:  
Lunch, Plenary Session and Wrap Up



# A.D. LATORNELL AWARD OF MERIT



Each year, the Ontario Chapter of the Soil and Water Conservation Society (SWCS) presents the A.D. Latornell Award of Merit. Art Latornell was involved in virtually every aspect of resources management in Ontario during his lifetime and was a role model for many beginning a career in conservation. These recipients exemplify Art and the SWCS by promoting and practicing an ethic which fosters the science and art of soil, water and related natural resource management to achieve sustainability.

The Award is available to students at the diploma, bachelor or master program level. The winner of the Award receives a one year membership to SWCS, a cash award of \$600 and a one day registration to the A.D. Latornell Conservation Symposium.

This year's Award recipient is:

**Meaghan Mechler**, Geography and Environmental Management (M.Sc.),  
*University of Waterloo*

Meaghan Mechler is beginning her Masters of Geography and Environmental Management, studying soil biogeochemistry at the University of Waterloo where she completed a joint honours degree in Biology, and Environment & Resource Studies. She has been "passionate about studying soils and agriculture since [her] second year of undergrad" and found herself taking numerous water, soil, botany, and microbiology courses. Meaghan is excited about soils, in particular agricultural soils, and the strong influence soil management and health can have on both water and air quality. "Soil degradation is an issue of serious importance" to her and she would "advocate that many others would reflect upon soil impacts in their work so that a larger quantity and diversity of solutions to soil degradation could be found".

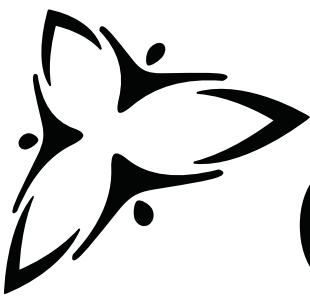
Apart from her studies, Meaghan has been analyzing the soil quality on her family's organically-managed farm and designing a soil-building permaculture experiment to conserve the land, biodiversity, and spring-fed creeks on the property. For many years Meaghan has been involved with the County of Wellington Green Legacy program. There she contributed in many ways to the planting of trees for buffer zones and living windbreaks, as well as teaching school children about local biodiversity and resource conservation. Meaghan hopes this Award will provide opportunities for networking to connect her to SWCS and other resources to further her education and studies, but as importantly to discover ways she can develop and contribute her evolving skills to projects in the soil and water conservation community.

# STUDENT MODERATORS

## MEET THIS YEAR'S STUDENT MODERATORS

Being a student moderator at the Latornell Symposium is a highly competitive position that is valued by all applicants. It is an excellent opportunity for post secondary students to practice public speaking, interact with a diverse group of conservation-minded individuals and attend an extensive range of presentations by industry leading experts. This year's moderators are from a broad range of disciplines including Geography, Landscape Architecture, Rural Planning and Engineering. Guided by Sara Epp, one of our Steering Committee members and herself a PhD student, our student moderators will play an instrumental role in the success of the Symposium and the Steering Committee is honoured to be working with them.

2016 STUDENT MODERATORS
<b>Daina Anderson</b> , <i>University of Waterloo</i>
<b>Kira Burger</b> , <i>University of Guelph</i>
<b>Kathleen Law</b> , <i>University of Guelph</i>
<b>Alice Lee</b> , <i>University of Guelph</i>
<b>Elen Lemaitre-Curri</b> , <i>Carleton University</i>
<b>Wendy Li</b> , <i>University of Guelph</i>
<b>Aislin Livingstone-White</b> , <i>University of Guelph</i>
<b>Rachael Marshall</b> , <i>University of Guelph</i>
<b>Haley Matschke</b> , <i>University of Guelph</i>
<b>Alison Milan</b> , <i>York University</i>
<b>Kirti Sehgal</b> , <i>University of Toronto</i>
<b>Tim Skuse</b> , <i>University of Toronto</i>
<b>Alexander Vrban</b> , <i>University of Guelph</i>
<b>Stephanie Worrton</b> , <i>University of Guelph</i>



# Ontario

Ministry of Natural Resources and Forestry  
is a proud supporter of the  
**Latornell Conservation Symposium**

The Latornell Conservation Symposium would like to thank RBC Foundation and RBC Blue Water Project for their commitment to the Symposium by once again being a Platinum Sponsor.



RBC Foundation™



RBC Blue Water Project™

get outside

MORE

more

PLAY

longer

WALK

in the forest

  
 Aim for a minimum of 60 minutes of physical activity per day for kids and 150 minutes per week for adults.

**Spending time in nature can make you happier, healthier and more relaxed.**

The York Regional Forest is the perfect place to enjoy fresh air and connect with nature. Take a stroll in one of the 18 scenic forest tracts to enjoy better mental and physical well-being.

Explore the forest with us by registering for a free monthly event or enrolling a group in the Nature's Classroom program.

Better health is a hike away.



Discover better health in a forest near you.  
[york.ca/health](http://york.ca/health) or [york.ca/forestry](http://york.ca/forestry)



# VISITING WITH EXHIBITORS

There are two areas where delegates can visit exhibitors during the Latornell Conservation Symposium.

The first area is the Exhibit Galleries (A and B). They are located near the concurrent session rooms on the lower level of the hotel.

A second area, the Conservation Dome, is located in the Plenary Area, where keynote speakers are hosted, meals are served, and social events take place.

Over the course of the Symposium, delegates can also relax and network in the GIO Green Space set up between Galleries A and B on the lower level of the Nottawasaga Inn. Wireless internet service is available.

## TUESDAY, NOVEMBER 15, 2016

8:30 AM – 11:00 PM	Exhibit Galleries Open Hours
3:30 PM – 4:00 PM	Refreshment Break with Exhibitors
5:30 PM – 7:00 PM	Wine and Cheese in the Exhibit Galleries
8:30 PM – 10:00 PM	Mix and Mingle in the Exhibit Galleries

## WEDNESDAY, NOVEMBER 16, 2016

8:30 AM – 6:00 PM	Exhibit Galleries Open Hours
10:00 AM – 10:30 AM	Refreshment Break with Exhibitors
4:00 PM – 4:30 PM	Refreshment Break with Exhibitors

## THURSDAY, NOVEMBER 17, 2016

8:30 AM – 12:00 PM	Exhibit Galleries Open Hours
10:00 AM – 10:30 AM	Refreshment Break with Exhibitors

## VISIT THE GIO GREEN SPACE

The Latornell Conservation Symposium and the Green Infrastructure Ontario (GIO) Coalition have created a relaxing green space for delegates. Located in the lower level between the two main exhibit galleries, come enjoy and experience first-hand the many benefits of green infrastructure. The space includes a rain garden and trees, as well as seating where delegates are encouraged to sit back, recharge their batteries\* and network.

\* Refers to one's energy level and not their mobile device

## BACK BY POPULAR DEMAND – SCALES NATURE PARK COMES TO LATORNELL

**Tuesday, November 15<sup>th</sup> from 5:30 PM – 7:00 PM in Exhibit Gallery B**



Scales Nature Park is a conservation centre focused on Canadian reptiles, amphibians, and fish and the habitats that sustain these creatures. The live collection of Canadian reptiles and

amphibians at Scales Nature Park is the most complete in the country, and is used for educational programming and other conservation activities. The facility is open to the general public (hours vary seasonally) and also provides outreach programming at a wide variety of venues, with clients including Ontario Parks, Parks Canada, conservation authorities, NGOs, libraries, schools, First Nations communities and many others. Scales Nature Park also conducts field research and stewardship activities, such as the Saving Turtles at Risk Today (START) project, which provide additional opportunities for volunteers and citizen scientists to get involved. [www.scalesnaturepark.ca](http://www.scalesnaturepark.ca)

## OPENING PLENARY SESSION

9:30 AM - 10:45 AM || OPENING PLENARY SESSION WITH KEYNOTE SPEAKER

**Dr. Faisal Moola**, Director General, Ontario and Northern Canada, David Suzuki Foundation



Dr. Faisal Moola is one of Canada’s most respected environmental scientists and advocates. His research in conservation science and environmental policy has been published in numerous academic journals and award-winning books and he is a regular contributor to the opinion pages of Canada’s leading newspapers.

For the past decade Faisal has led an expert team of scientists, policy experts and community organizers at the David Suzuki Foundation, in support of the protection of Canada’s cherished wild spaces and endangered species, as well as the greening of our towns and cities. Faisal has been at the forefront of some of Canada’s most iconic environmental battles, including successful efforts to protect B.C.’s Great Bear Rainforest and efforts to pass a national law to protect endangered species throughout the country.

After living for several years on the west coast, Faisal has come back to the Greater Toronto Area, where he was born and raised. He is Director General for the Ontario and Canada’s North Department at the David Suzuki Foundation and has an adjunct faculty appointment at the University of Toronto and York University. He’s an avid cyclist and spends as much time as possible exploring the wonders of nature with his family.



Ontario Trillium Foundation



Fondation Trillium de l’Ontario





# DAY ONE

## Watershed Management

T1A ROOM 15

### How Much is Too Much? Cumulative Effects of Headwater Stream Loss

Small streams are being lost incrementally to development. These cumulative losses have consequences for water quality, biodiversity and ecosystem services. This session will combine empirical and modelling studies to explore and predict the downstream impacts of headwater stream loss.

### An Overview of the Trim the Tribes Research Initiative: History, Objectives and Process

**Les Stanfield**  
*(Ecohealth Solutions)*

### Empirical Models for the Assessment of Biological Condition of Ontario Streams Using Invertebrates and Fish

**Bernadette Charpentier**  
*(University of Ottawa)*

### Modelling Streamflow and Stream Chemistry for Headwater Basins on the Oak Ridges Moraine Using SWAT

**Ibrahim Rashid**  
*(Trent University)*

### Take it From the Top: Predicting Properties of Headwater Drainage Features Using Multiscale Approaches

**Brian Kielstra**  
*(University of British Columbia)*

## Natural Heritage

T1B ROOM 1

### Greener Roads and Highways

This session showcases Ontario examples of projects that seek to mitigate the impacts of our ever increasing road network. This session explores a wildlife ecopassage case study, ongoing research to enhance roadside vegetation survival and partnership opportunities with Ministry of Transportation highway infrastructure *Endangered Species Act* overall benefit projects.

### The Wildlife Safe Passage Project: Protecting Herpetofauna

**Kaitlyn Read**  
*(Lake Simcoe Region Conservation Authority)*

### Greening Canada's Highways: Remediating Roadside Soils

**Jason Henry**  
*(Vineland Research and Innovation Centre)*

### Mitigating Provincial Highway Infrastructure: Partnership Opportunities for ESA Overall Benefit Projects

**Khahy Ho**  
*(Ministry of Transportation)*

## Public Places & Park Systems

T1C ROOM 8

### Design and Placemaking Destinations Using Green Infrastructure

Integrating nature into urban design can create inviting spaces and foster a sense of community. Green Infrastructure projects present an opportunity to 'place make' and create destinations that also perform other important services. This session demonstrates the challenges, successes and uniquely innovative strategies of green infrastructure design in public spaces.

### Intensification of Green Stormwater Infrastructure: Using Design to Achieve Social, Economic and Environmental Benefits

**Ian Roul**  
*(GeoProcess Research Associates)*  
and **Chad M. Carreras**  
*(Dillon Consulting Limited)*

### Landscape As Catalyst: Integrated Social Ecologies

**James Roche**  
*(DTAH)*

### Toronto's Green Streets

**Sheila Boudreau**  
*(City of Toronto)*

11:00 AM – 12:30 PM

## Agriculture

T1D ROOM 9

### The Only Constant is Change

Farming in the Past, Present and Future... what can it tell us about stewardship in the future?

#### Long Term Agriculture Change in Rural Ontario

**Paul Smith**  
*(Ontario Ministry of Agriculture, Food and Rural Affairs)*

#### Measuring Farmland Loss and Impacts on Natural Systems

**Sara Epp, Dr. Wayne Caldwell and James Newlands**  
*(University of Guelph)*

#### Trends in Sustainable Agriculture

**Nick Betts**  
*(Ontario Ministry of Agriculture, Food and Rural Affairs)*

## Communications & Marketing

T1E ROOM 11

### Social Marketing Around the Home and in the Community

Even when the value and benefits of specific actions are well communicated, behavioural change can be fraught with barriers that keep people stuck in their old routines. Participants in this session share experiences and techniques for achieving environmental change around the home and in the community.

#### Septic Savvy - A CBSM Approach to Septic Maintenance

**Katie Stammer**  
*(Essex Region Conservation Authority)*

#### Creating a Trend in Water Efficient Gardening

**Mary Hemmingway**  
*(The Regional Municipality of York)*

#### Testing a Neighbourhood-Based Approach to Mitigating Basement Flood Risk

**Cheryl Evans**  
*(University of Waterloo)*

#### Curb The Salt Campaign - Building Awareness on Winter Salt and Water Quality

**Leanne Lobe and Colleen Brown**  
*(Region of Waterloo)*

## Stormwater

T1F ROOM 2

### Showcasing Success: Supporting Dynamic Flows Using LID

Dynamic flow regimes play an important role in maintaining riverine ecological health. This session explores how the strategic use of LID helps with this, and also how public spaces can be leveraged to maintain predevelopment hydrology.

#### Assessing LID Practices on Corporate Grounds - Successes, Challenges and Ongoing Initiatives

**Alex Fitzgerald**  
*(Credit Valley Conservation)*

#### Getting Green Infrastructure on Public Lands: Understanding Maintenance through Monitoring to Ensure Long-Term Performance

**Alexandra Veglio**  
*(Credit Valley Conservation)*

#### Using Green Infrastructure to Meet Environmental Flow Needs

**Cassie Schembri and Wolfgang Wolter**  
*(Ecosystem Recovery Inc.)*



## TUESDAY LUNCHEON PROGRAM

1:00 PM - 1:15 PM || KEYNOTE SPEAKER

**Dr. Dianne Saxe, Environmental Commissioner of Ontario**



Dr. Dianne Saxe is the Environmental Commissioner of Ontario (ECO), a *tough but fair watchdog over Ontario's environmental, energy and climate performance, and guardian of the Environmental Bill of Rights (EBR)*. The ECO is a bridge between the public and the government on environmental issues.

Prior to her appointment, Dianne was one of Canada's most respected environmental lawyers. She has 40 years' unparalleled experience writing, interpreting, and litigating Ontario's energy and environmental laws. Dianne's career began with the Ontario Public Service and two major Bay Street law firms. She then established one of Canada's top environmental law boutiques.

A Certified Environmental Law Specialist, Dianne is recognized in every Canadian and international legal rating service, including acknowledgement as one of the world's top 25 environmental lawyers by *Best of the Best, 2008* and as *Best Lawyers' first Environmental Lawyer of the Year for Toronto*. Some of her numerous tributes and honours include the Award for Distinguished Service, the highest honour granted by the Ontario Bar Association; and the Gold Key Award for exceptional lifetime professional achievement, granted by Osgoode Hall Law School Alumni.

Dianne has travelled extensively in Ontario and Canada, both in her professional practice and as a keen canoeist, kayaker and cross-country skier.

Her five-year appointment will be focused on serving the Ontario Legislature, improving the effectiveness of the *Environmental Bill of Rights* and catalyzing better environmental, energy and climate outcomes, for and with the people of Ontario.

**IN THE TIME IT TOOK BILLY TO CONVINCE HIS OLDER BROTHER TO LET HIM PLAY WITH THE BIG KIDS...**



**YOU COULD'VE DONE A FARMLAND HEALTH CHECK-UP.**

Working with a Certified Crop Advisor for a few hours to assess your farm's soil and pollinator health opens the door for up to \$50,000 cost-share funding through the Farmland Health Incentive Program.

The Farmland Health Check-Up — it's time well spent.

Limited to farm businesses in the Great Lakes Agricultural Stewardship Initiative eligible area.

To get started, email: [GLASI@ontariosoilcrop.org](mailto:GLASI@ontariosoilcrop.org)





## LATORNELL LEADERSHIP AWARDS

### 1:15 PM - 1:45 PM || LATORNELL LEADERSHIP AWARD CEREMONY

The Latornell Leadership Awards are intended to help acknowledge individuals who have helped to celebrate and inspire innovation in the conservation field and have made a difference in their area of expertise. Our award recipients have encouraged and motivated others to take similar leadership roles towards conservation work. Through their personal activities and/or leadership, they have gone beyond the call of duty or responsibility to an employer, client or their community.

For further information on our 2016 award recipients, please see the Latornell Leadership Awards Program which will be available at the awards luncheon.



#### MASTER OF CEREMONIES:

**Tom Prout**, 2015 Latornell Leadership Award Recipient  
Tom Prout served for more than three decades as General Manager and Secretary-Treasurer of Ausable Bayfield Conservation Authority. Tom's ability to inspire young conservation professionals, his unique and valued style of quiet leadership, and his roots in agriculture helped him forge a meaningful career. Throughout, Tom constantly sought to lead both those whose livelihoods are derived

from the land and those who value Nature as an end in itself, to develop a deeper understanding of how various factors impact the total environmental landscape.

### 2016 LEADERSHIP AWARD RECIPIENTS



**Clarke Birchard**, Chesley ON

Retired Supervisor for Outdoor Education for the Bluewater Board of Education for Grey and Bruce Counties

*Nominated by: Saugeen Nature, Hanover ON*



**Peter Gray**, Bright ON

Vice President, MTE Consultants Ltd and Co-Chair, Waterloo Wellington Children's Groundwater Festival

*Nominated by: Waterloo Wellington Children's Groundwater Festival, Kitchener ON*



**Richard (Dick) Hunter**, Peterborough ON

Past General Manager, Conservation Ontario and Retired CAO, Otonabee Region Conservation Authority

*Nominated by: Otonabee Region Conservation Authority, Peterborough ON*



**Gord MacPherson**, Toronto, ON

Associate Director, Restoration Projects, Toronto and Region Conservation

*Nominated by: Toronto and Region Conservation, Toronto ON*



**Thomas (Thom) McClenaghan**, London ON

President, Friends of the Coves Subwatershed Inc.

*Nominated by: The City of London, ON*



# DAY ONE

## Watershed Management

T2A ROOM 15

### **Au Naturel: Storm Water Management Ponds and Reclaimed Lands**

This session will look at storm water management, the natural way and examine the enhancement of the Windermere Basin (14 ha wetland restoration completed in 2012). When different levels of government, developers, landowners, and stakeholder groups work together, the results can be powerful.

### **Storm Water Management Ponds - The Natural Way**

**Mike Williams**  
*(Ducks Unlimited Canada)*

### **Enhancement of Windermere Basin - 4 Years After Restoration**

**Mark Bassingthwaite**  
*(Cole Engineering Group Ltd.)*  
**Gord Wichert**  
*(SLR Consulting Canada)*  
**and John Helka**  
*(City of Hamilton)*

## Natural Heritage

T2B ROOM 1

### **Protecting Species at Risk**

Habitat loss, degradation and invasive species are impacting Ontario's species at risk. This session will discuss how green infrastructure can benefit these species through regulations and recovery plans, and how long-term monitoring information can influence restoration efforts.

### **Reducing Anthropogenic Threats to Aquatic Species at Risk Through Green Infrastructure, Mitigation, and Recovery Actions**

**Shelly Dunn and Dave Balint**  
*(Fisheries and Oceans Canada)*

### **Hine's Sight is 20/20: The Importance of Long-term Species at Risk Data Sets**

**Heather Polan**  
*(GHD)*

## Public Places & Park Systems

T2C ROOM 8

### **Land Securement - Green Infrastructure at the Landscape Scale**

Green infrastructure considerations at a landscape scale are important with respect to wildlife movement, climate change and biodiversity. This session will focus on the protection and conservation of large natural areas using experiences from Algonquin to Adirondacks, Cootes to Escarpment Ecopark system, and places of biodiversity value in Southern Ontario.

### **Protecting Green Infrastructure at the Landscape Scale: The Algonquin to Adirondack Collaborative**

**David Miller**  
*(Algonquin to Adirondacks Collaborative)*

### **The Cootes to Escarpment EcoPark System; an Innovative Partnership for Preserving, Restoring and Stewarding Natural Lands**

**Peter Kelly**  
*(Cootes to Escarpment EcoPark System)*

### **Protecting our Living Infrastructure: Places of Biodiversity Value**

**Graham K. Bryan**  
*(Environment and Climate Change Canada - Canadian Wildlife Service)*

2:00 PM - 3:30 PM

## Agriculture

T2D ROOM 9

### Stewardship Beneath Your Feet

Learn how Ontario is well-positioned to become a low-carbon food production leader

---

### Healthy Soils: The Most Fundamental Form of Green Infrastructure

**Glenn Munroe**  
*(Office of the Environmental Commissioner of Ontario)*

### Sampling for Soil Health and Conservation Strategies

**Andrew Barrie**  
*(Ontario Ministry of Agriculture, Food and Rural Affairs)*

## Communications & Marketing

T2E ROOM 11

### The Midst of a Digital Revolution

Now, more than 15 years since the popularization of the web, digital technology has forever changed the way we communicate. Whether marketers, ecologists or administrators, we are confronting powerful forces that are shifting the way we interact with each other and with organizations, how dialogue occurs, how decisions are made, and how relationships are forged.

---

### Meeting the Challenges of a Changing Communications Landscape

**Rick Sikorski**  
*(Toronto and Region Conservation)*

### Mastering the Message in a 2.0 World

**Sandi Ramsay**  
*(Lower Trent Conservation)*

### Online and Interactive: Free Visualization Tools for Communicating the Science on Controversial Projects

**Ivana Vouk**  
*(National Research Council Canada)*

## Stormwater

T2F ROOM 2

### Soaking It In: RainScaping to Restore Watershed Hydrology

Learn how a multi-pronged approach to combating the ills of urban stormwater in the Lake Simcoe Basin is working to protect and restore the Lake's health through depaving, disconnection, LID implementation and other initiatives.

---

### Mainstreaming Low Impact Development Within the Lake Simcoe Watershed

**Ben Longstaff**  
*(Lake Simcoe Region Conservation Authority)*

### Setting New Guidelines for Stormwater Management: Treating the 90<sup>th</sup> Percentile Rain Event

**Tom Hogenbirk**  
*(Lake Simcoe Region Conservation Authority)*

### A Modeling Tool to Assist Incorporation of LID into New Development and Retrofit Opportunities

**Steve Auger**  
*(Lake Simcoe Region Conservation Authority)*

### A Path to Recovery – Developing and Implementing Urban Focused Stewardship Program

**Andee Pelan**  
*(Lake Simcoe Region Conservation Authority)*



# DAY ONE

## Watershed Management

T3A ROOM 15

### A Balancing Act: The Wetland Water Balance Project

Inadequacies of existing development projects have demonstrated the need for preserving wetland form and function through water balance. This project team has advanced their understanding of wetland ecohydrology and used their analysis to support hydrologic modeling tools and monitoring guidelines to help predict and mitigate impacts of an urbanizing landscape.

### A Balancing Act: Preserving Wetland Ecohydrological Functions through Water Balance

**Neil Taylor**  
*(Toronto and Region Conservation)*

### Protecting Urban Wetlands Through Hydrologic Modelling Approaches to Support Green Infrastructure Design

**Caroline Charbonneau**  
*(University of Guelph)*

### Comparative Evaluation of Different Continuous Hydrologic Models in Simulating Wetland Hydrology

**Dilnesaw Chekol and Nathan Plato**  
*(Toronto and Region Conservation)*

## Natural Heritage

T3B ROOM 1

### Species at Risk Stewardship Fund: Celebrating 10 Years!

Come learn about MNRF's Species at Risk Stewardship Program, including insight into the review process, and tips for submitting a successful funding proposal. Co-delivered by MNRF staff and funding recipients, several stewardship project success stories will be featured. Learn about the work underway to help recover some of Ontario's rarest species.

### Species at Risk Stewardship Fund: Overview and Tips for Applicants

**Kim Jaxa-Debicki**  
*(Ministry of Natural Resources and Forestry)*

### Conserving Ontario's Badgers

**Josh Sayers**  
*(Ontario Badger Project)*

### Queen Snake Stewardship in Ontario

**Rachel White**  
*(Huron Stewardship Council)*

### Sydenham River Habitat Stewardship Program

**Steve Shaw**  
*(St. Clair Region Conservation Authority)*

## Public Places & Park Systems

T3C ROOM 8

### Public Spaces: Crowded Places

Public parks and open spaces are experiencing a wave of visitation previously unrecorded. Residents and tourists are seeking natural experiences, outdoor recreational pursuits or merely outdoor opportunities in a densely urban environment. Park managers need to find new ways to provide experiences for a growing and increasingly diverse population with limited space and other resources. Listen to the challenges and opportunities faced by municipal, CA and federal parks managers as they battle the growing green infrastructure deficit.

### The Municipal Parks Perspective

**Paul Ronan**  
*(Ontario Parks Association)*

### The Conservation Areas Perspective

**Chris Hachey**  
*(Grey Sauble Conservation Authority)*

### The Federal Parks Perspective

**John Haselmayer**  
*(Bruce Peninsula National Park / Fathom Five National Marine Park)*

4:00 PM – 5:30 PM

## Agriculture

### T3D ROOM 9

#### **I Don't Know What I Don't Know - Open Source Data Sets**

Digital tools can be the bridge between field work and planning. Learn about examples from the local, provincial and federal level that can help you in your project or program design!

---

#### **2015 SWOOP Data**

**Tracey McPherson**

*(Ausable Bayfield Conservation Authority)*

#### **Canadian Crop Mapping**

**Leander Campbell**

*(Agriculture and Agri-Food Canada)*

#### **Updating Soil Maps**

**Nicole Rabe**

*(Ontario Ministry of Agriculture, Food and Rural Affairs)*

## Communications & Marketing

### T3E ROOM 11

#### **Decoding Your Audience**

Who are the people that make up your target audience? What do they value? What are their frames of reference? It's easy to ask questions about audiences, but how do you actually find what makes specific groups of people tick, and then what do you do once you've found out?

---

#### **Communicating with the Right Target Audience in a Shifting Landscape**

**Jacqui Empson Laporte**

*(Ontario Ministry of Agriculture, Food and Rural Affairs)*

#### **Canadian Attitudes Towards Water: A Decade of Polling**

**Sarah Thompson**

*(Royal Bank of Canada)*

#### **Using Public Opinion Polling Data to Connect With Watershed Residents on the Health of Lake Erie**

**Raj Gill**

*(Canadian Freshwater Alliance)*

#### **Google for Green: Targeting Online Audiences, Crafting Google Ads, and Mining Campaign Data**

**Paul Cassel**

*(Up Marketing)*

## Stormwater

### T3F ROOM 2

#### **End of the Line for End of Pipe? Comparing Conventional and Low Impact SWM Approaches**

The implementation of green infrastructure in Southern Ontario has increased substantially in the last two decades. This session will unpack the vital role that soil health and compaction play in determining the performance of green infrastructure.

---

#### **Comparative Performance of Green Infrastructure and Conventional Stormwater Management Practices: Insights from over 20 years of Monitoring in the Toronto Region**

**Tim Van Seters**

*(Toronto and Region Conservation)*

#### **Creating More Absorbent Landscapes Through Soil Management Best Practices**

**Dean Young**

*(Toronto and Region Conservation)*



# DAY ONE

## WINE AND CHEESE + CHOOSE YOUR OWN ADVENTURE EVENTS

### WINE AND CHEESE NETWORKING RECEPTION 5:30 PM – 7:00 PM

Delegates are invited to join us for networking and ‘gnoshing’ at the Exhibitor’s Wine and Cheese event taking place in the lower level of the Nottawasaga Inn & Conference Centre on Tuesday, from 5:30 PM - 7:00 PM.

### SCALES NATURE PARK 5:30 PM – 7:00 PM

Come join us in Exhibitors’ Gallery B for our annual live animal exhibit. Each year an Ontario facility provides us with a “show and tell” display of animals of various species. This is sure to provide a fun and interactive way of showcasing animals in an educational and safe manner. Their profile can be found on page 11.

### VQA WINE DRAW AND ONTARIO CRAFT BEER DRAW 8:15 PM – 8:30 PM

A limited number of ‘hot’ tickets will be available for a ‘timed sale’ at the Harvest Banquet on Tuesday, November 15<sup>th</sup>. Tickets will be \$20 each or 3 for \$50. Two draws will take place in the Conservation Dome, one for the wine and one for the beer. You must be present to win.

- Prizes** – A selection of fine Ontario wines donated by the Latornell Steering Committee
- A case of Ontario Craft Beers donated by the Latornell Steering Committee

Winning cards will be drawn by Brian Henshaw of Beacon Environmental, this year’s Wine and Beer Draw Sponsor.



### CHOOSE YOUR OWN ADVENTURE 8:30 PM START TIME

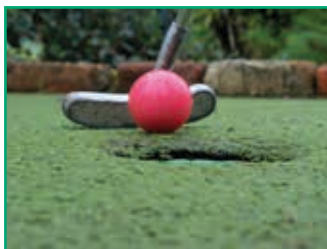
Following dinner on Tuesday evening delegates have a choice of activities:

- » **Continue to Mix and Mingle with Exhibitors until 10:00 PM**

**Location:** Exhibitors’ Galleries. Conversation supplied.

- » **Jungle Quest Team Mini-Golf Tournament**

Journey through our action-packed 18 hole, par 36, Jungle Quest mini-putt adventure. As you navigate along a winding fun-filled expedition you will encounter treacherous lush terrain, as well as native wildlife hiding around every corner.



Players will be organized into teams of 4 – either come as a team or we can place you in a foursome when you arrive at the course. All players must complete the course or the entire team will forfeit.

As per standard golf rules, the team with the lowest combined score wins.

**Location:** Meet at 8:30 PM at Hole 1 of the Jungle Quest Mini Golf course located beside the health and fitness centre registration desk.

- » **Sounds Familiar Music Trivia Contest**



Working in teams of 4, you and your teammate’s knowledge of music through the ages will be tested. There will be prizes and bragging rights for the team with the most correct answers. The questions will be related to music from the 1950’s to current, so teams comprised of people with diverse ages will likely have an edge. Participants can form their own teams ahead of time, or will be placed on a team when they arrive. Let’s find out who the real rock stars are at Latornell this year!

**Location:** Starlite Lounge

## CHOOSE YOUR OWN ADVENTURE EVENTS CONTINUED

### » **Great Grapes : Discover the Wines of Ontario**

See. Swirl. Sniff. Sip. Learn how to properly taste wine and pair it with foods that really make it sing! Join wine expert Stuart Alford for a fun and delicious learning experience. This Introduction to Wine will focus on tasting and pairing some extraordinary Ontario wines. Learn about the distinct styles of Ontario VQA wines that showcase the diversity of our homegrown talent.

**Note:** *Get your tickets early - there is limited capacity.* There is a cost of \$25 and participants are required to pre-register for this event.

Registration can be found on the Latornell

website or through the link provided in the early November newsletter. On-site registration can be found at the Symposium Registration Desk until 4:00 PM Tuesday November 15<sup>th</sup>.



**Location:** Room 40

This event is sponsored by: Hutchinson Environmental Sciences Ltd. Bracebridge - Kitchener – Edmonton [www.environmentalsciences.ca](http://www.environmentalsciences.ca)



### » **NEW this Year – The Latornell After Party (The LAP!) 9:00 PM – 1:00 AM**



The networking and late-night socializing formerly held in the Hospitality Suite (Room 41) has been moved to the Starlite Lounge. You will find the Starlite Lounge tucked away on the 3<sup>rd</sup> floor, behind Registration and up the stairs. On Tuesday after the CHOOSE YOUR OWN ADVENTURE activities and on Wednesday after THE DEBATERS, make your way over to the LAP for music, board games and cards. The bar

will be open until 1:00 AM for your fun and amusement. See you at The LAP!

**Location:** Starlite Lounge



# DAY TWO

## Watershed Management

W1A ROOM 15

### Water and Wastewater Systems: Managing Today's Issues

Water and wastewater management are critical components for both urban and rural municipalities and landowners. This session will examine water and wastewater systems in an urban and rural context, data management, centralized versus decentralized systems and the importance of integrated watershed management.

### Watershed Approach to Management of Water Supply and Wastewater Systems: Gaps and Issues

**Stephanie Worrone**  
*(University of Guelph)*  
and **James Johnstone**  
*(Town of Innisfil)*

### Management of Private Water and Waste Water Systems in Rural Ontario

**John Fitzgibbon**  
*(University of Guelph)*

### Decentralized Wastewater Treatment Is Sustainable Infrastructure

**Rick Esselment**  
*(Ontario Onsite Wastewater Association)*

## Natural Heritage

W1B ROOM 1

### Natural Infrastructure in the Big Picture: On-ground Options for a Green and Healthy Future in Canada's Deep South

In Carolinian Canada, where the stakes are high for rare species, human communities and agriculture, natural infrastructure is a cost-effective climate change survival kit. But we need to reverse the centuries-old trend of biodiversity loss. What is feasible starting with <3% protected land? Who is sparking game-changing shifts in landcare from Toronto to Windsor?

**Moderator**  
**Michelle Kanter**  
*(Carolinian Canada Coalition)*

### Big Picture Challenges – Where Do We Go from 6% Natural Habitat?

**Don Pearson**  
*(Lower Thames Valley Conservation Authority / Carolinian Canada)*

### Urban Approaches – Where Do We Go from 13% Natural Habitat?

**Patrick Donnelly**  
*(City of London)*

### First Nations Opportunities - Where Do We Go from 67% Natural Habitat?

**Clint Jacobs**  
*(Walpole Island Heritage Centre)*

## Stewardship

W1C ROOM 19

### Restoration isn't Easy; But the Pay-off is Big!

From difficult site conditions to the challenges with harnessing volunteer labour, restoring the ecological value of land is always more difficult and time-consuming than you anticipate. Learn from practitioners as they talk about successes and how to avoid some pitfalls.

**Port Granby Nature Reserve: Realizing the Vision**  
**Amy Burke**  
*(Municipality of Clarington)*  
and **Mark Peacock**  
*(Ganaraska Region Conservation Authority)*

**Improving Green Infrastructure in a School Setting: Peel EcoSchools**  
**Rachel Stewart**  
*(Toronto and Region Conservation)*

**Get to the Source – How the City of Guelph Protects Its Acreage and Aquifers with Trees**  
**Karen McKeown and Jennifer Gilks**  
*(City of Guelph)*

## Agriculture

W1D ROOM 9

### New Initiatives – Highlights from the Sub-watershed Project

To achieve measurable improvements in water quality, we need to know critical information. Join us to see what they discovered!

**Maitland Valley – Garvey Glenn Drain**  
**Sarah Fleischhauer**  
*(Maitland Valley Conservation Authority)*

**Wigle Creek**  
**Katie Stammer**  
*(Essex Region Conservation Authority)*

**Medway Creek**  
**Craig Merkley**  
*(Upper Thames River Conservation Authority)*

8:30 AM – 10:00 AM



## Communications & Marketing

## Stormwater

## Green Economy

### W1E ROOM 2

### W1F ROOM 11

### W1G ROOM 18

#### What Resonates with Governments

Environmental protection and enhancement can be enacted on a much larger scale through policy and legislative changes by governments; but with election commitments and limited resources, which environmental issues gain priority? This session explores the importance of government relations to the environmental sector.

.....

#### Environmental

##### Communications: Strategic and Political Considerations

Don Huff  
*(ECO Strategy)*

#### Green Infrastructure

##### Ontario Coalition: Provincial, Federal, and Municipal Policy Progress

Michelle Sawka  
*(Green Infrastructure Ontario Coalition)*

#### Influencing Canadian

##### Policy on Carbon and Clean Innovation

Andrew Craig  
*(Royal Bank of Canada)*

#### A Foot in the Door -

##### Leveraging Government Relations

Lisa Turnbull and Elizabeth Oakley  
*(Toronto and Region Conservation)*

#### Making It Work: Plans, Guidance and Approaches for Getting LID into the Ground

Forays into the use of LID can seem complicated. Luckily, help and guidance exists. Join staff from Credit Valley Conservation as they review the ins and outs of LID retrofit projects from the design stage all the way through to construction and assumption. Approaches to estimating the long-term costs and savings of LID will be explored.

.....

#### Grey to Green Road Retrofits for Road Right-of-Ways:

##### - Principles of LID design for Road Right-of-way Projects

Cassie Schembri  
*(Credit Valley Conservation)*

##### - Principles of LID Construction for Road Right-of way Projects

Samantha Paquette  
*(Credit Valley Conservation)*

##### - Principles of LID Inspection and Maintenance

Kyle Vander Linden  
*(Credit Valley Conservation)*

#### Stormwater Fees

Stormwater management currently has a number of challenges including increasing permeable surfaces, climate change, and aging infrastructure. To help address these challenges, some local governments have begun implementing stormwater fees or charges. This session will outline a number of these case studies, including the recent initiative in the City of Mississauga.

.....

#### Using Fees to Address Current Stormwater Management Challenges; Home and Abroad

Jessica Isaac  
*(Office of the Environmental Commissioner of Ontario)*

#### Collaborate for Success! CA-Municipal Partnerships to Maximize Stormwater Charge and Green Infrastructure Opportunities

Victoria Kramkowski  
*(City of Mississauga),*  
Alyssa Cerbu  
*(Partners in Project Green / Toronto and Region Conservation)* and  
Deborah Kenley  
*(Credit Valley Conservation)*



# DAY TWO

## Watershed Management

W2A ROOM 15

### The One Water Approach: Framework for the Integrated Management of All Water Systems

This session will provide insight into the barriers, challenges and silos that exist in current water management systems that hinder the 'one water' paradigm shift. The session will also highlight lessons learned through steps taken towards implementation of a 'one water' approach as well as integrated holistic assessment approach and case studies demonstrating economic, environmental and social benefits derived by participating facilities.

#### Towards a "One Water" Approach:

##### - What is a One Water Approach?

**Jayeeta Barua**  
*(Credit Valley Conservation)*

##### - Practical Case Studies and Lessons Learned from Implementing One Water Projects in Ontario

**Bruce Taylor**  
*(Enviro-Stewards)*

##### - What's Next? How to Drive Wide Scale Adoption of One Water?

**Kyle Vander Linden**  
*(Credit Valley Conservation)*

## Natural Heritage

W2B ROOM 1

### Biodiversity Matters! The Role of Biodiversity in Attenuating Flood Risk

Join the members of the Ontario Biodiversity Council and explore the concept and practice of "natural" green infrastructure and the opportunity it provides to build climate resilience into the conservation fabric of Ontario's communities and landscapes. This session will highlight current work and critical next steps to enhance resilience.

**Moderator**  
**Biodiversity Matters! Opening Remarks**  
**Steve Hounsell**  
*(Ontario Biodiversity Council)*

**Panel**  
**Managing Storm Water with Natural Systems**  
**Deborah Martin-Downs**  
*(Green Infrastructure Ontario)*

**Weathering the Storm with Wetlands**  
**Lynette Mader**  
*(Ducks Unlimited Canada)*

**Developing a Business Case for Wetlands Preservation**  
**Natalia Moudrak**  
*(Natural Infrastructure Adaptation Program at Intact Centre on Climate Change Adaptation)*

## Stewardship

W2C ROOM 19

### Engaging Citizens and Homeowners to Take Actions to Enhance Our Natural Systems

One of the biggest challenges in stewardship is that it will almost always be easier to just NOT do the work. This session explores different ways of connecting with landowners and volunteers to inspire them to do projects for the greater good.

**Hamilton Harbour Watershed Stewardship Project - 20 Year Summary (1994 -2014)**  
**Kent Rundle**  
*(Conservation Halton)*  
**and Sheila O'Neal**  
*(Hamilton Conservation Authority)*

**Insight into Outreach: BlueScaping in the Kawarthas**  
**Greg Bunker**  
*(Kawartha Conservation)*

**Growing Community by Seed: The Native Plant Propagation Program**  
**Kirushanth Gnanachandran**  
*(The Riverwood Conservancy)*

## Agriculture

W2D ROOM 9

### Using Land as a Means of Stewardship

Learn why soil health is important and what is being done to conserve it. Discover opportunities to adapt land use for food production and to build green infrastructure.

**Farmland as Green Infrastructure: Supporting Local Food and Farming on Conservation Lands**  
**Matt Setzkorn**  
*(Ontario Farmland Trust)*

**Backyard Bounty: Transforming Urban Land into Local Food Havens**  
**Kate Potter**  
*(Orland Conservation)*

10:30 AM - 12:00 PM

## Communications & Marketing

W2E ROOM 11

### Building Green Infrastructure Communities

What compels people to get involved in green infrastructure? The presenters in this session share how they have engaged people, communities and even coworkers to take an active role.

#### Kingscourt Groundbreakers: A Rain Garden Program for a Flood-Prone Neighbourhood in Kingston, ON

Alec Ross  
*(Red Squirrel Conservation Services)*

#### Using the Latest Multi-Media Tools to Engage Schools in Green Infrastructure

Julie McManus and Jakob Wrobel  
*(Credit Valley Conservation)*

#### York Region's Interdepartmental Communication and Collaboration on Healthy Forests and Healthy Communities

Carol Karner and Heidi Breen  
*(The Regional Municipality of York)*

## Stormwater

W2F ROOM 2

### Multifunctional Rural Infrastructure for Multifaceted Needs

What green infrastructure opportunities and inventories exist on the rural landscape? Join us as we showcase ways in which green infrastructure can shape the overall rural landscape system, and how municipal drains can be an integral component of a rural stormwater treatment train.

#### The Case for Using Green Infrastructure in Planning Resilient Rural Communities

Paul Kraehling  
*(University of Guelph)*

#### Use of Drainage Act Assessments to Evaluate Costs of Rural Natural Channel Design

Jacqui Empson Laporte  
*(Ontario Ministry of Agriculture and Rural Affairs)*

## Green Economy

W2G ROOM 18

### Green Asset Management

Explore how asset management and natural capital principles can be applied to green infrastructure assets. These assets provide important services and by highlighting the social and economic costs of potential engineered replacements, asset management can help improve urban planning processes and increase integration of green assets into communities.

#### Developing an Asset Management Framework for Eco-Assets

Shauna Dunsford  
*(Corporation of the City of Barrie)*

#### Incorporating the Value of Municipal Natural Assets into Decision-making

Tatiana Koveshnikova  
*(Credit Valley Conservation)*

We would like to acknowledge Shirley den Houdyker, Winkelmolen Nursery Ltd., and Verbinnen's Nursery Ltd. for their contribution to the "Greening Up" of the Conservation Dome.



Shirley den Houdyker  
Landscape



Winkelmolen  
Nursery Ltd.





# DAY TWO

## WEDNESDAY LUNCHEON PROGRAM

### WEDNESDAY RBC FOUNDATION LUNCHEON PROGRAM FEATURING THE YCP GRADUATION CEREMONY & KEYNOTE BRENT TODERIAN



#### 12:35 PM - 12:55 PM || YOUNG CONSERVATION PROFESSIONALS PROGRAM GRADUATION CEREMONY

The Centre for Land and Water Stewardship, University of Guelph, announced the Young Conservation Professionals Leadership Program (YCP) at the 2004 Latornell Conservation Symposium. As part of the University of Guelph's Centre for Land and Water Stewardship, YCP is an intensive personal and professional development program designed to enhance the leadership and management skills of upcoming leaders in conservation and environmental fields.

The program is especially suited to agencies and organizations with limited professional development resources, limited budgets, and a pressing need for the next generation of leaders to "step-up". The YCP leadership program takes place over the course of one calendar year and includes three three-day residential retreats and up to six practical skills workshops between the residential events. All activities are focused on developing leadership and management skills.

YCP graduation ceremonies are held during the Latornell Conservation Symposium. Since program inception in 2005, YCP has enhanced the leadership and management skills of 202 emerging conservation leaders.

A total of 12 people will be graduating from the 2017 Young Conservation Professionals Leadership Program (YCP) this year, marking the twelfth year of the program.

#### THE 2016 YCP PROGRAM GRADUATES ARE:

**Emily A. Araujo**, *CH2M*

**Renée Charette**, *Trails Youth Initiative*

**Melissa Deisley**, *St. Clair Region Conservation Authority*

**Greg Van Every**, *Lower Thames Valley Conservation Authority*

**Kirushanth Gnanachandran**, *The Riverwood Conservancy*

**Mark Looker**, *Credit Valley Conservation*

**Spencer McDonald**, *Upper Thames River Conservation Authority*

**Christopher Polap**, *Hamilton Conservation Authority*

**Morgan Roblin**, *Escarpment Biosphere Conservancy*

**Larissa Schiffmann**, *Ontario Streams*

**Sheri Steinginga**, *Nottawasaga Valley Conservation Authority*

**Leanne Wallis**, *Credit Valley Conservation*

For more information about YCP, please visit us at [www.ycpleadership.ca](http://www.ycpleadership.ca).

## KEYNOTE SPEAKER

12:55 PM - 1:45 PM || KEYNOTE SPEAKER

**Brent Toderian**, Founder and Principal, Toderian Urban Works



**Brent Toderian** is a nationally and internationally respected thought-leader on cities, and a renowned practitioner in advanced urbanism, city planning and urban design. He consults for cities & forward-thinking developers across Canada and the globe, with current or recent engagements that include cities as far away as Sydney, Auckland, Oslo, Helsinki, and Medellin, and as close as Burlington & London Ontario.

Brent's establishment of TODERIAN UrbanWORKS in 2012 followed 6 years of significant achievement as Vancouver's Chief Planner, with accomplishments that included 2010 Winter Olympics-related planning & design, the award-winning EcoDensity and Greenest City Initiatives, and strategies emphasizing a "complete city," not just a livable one.

Brent was also Manager of Centre City Planning + Design, and Chief Subdivision & Neighbourhood Planner, in Calgary Alberta, and an award-winning planning + design consultant for 9 years at the beginning of his career in Ontario, with projects ranging from Toronto to Yellowknife.

Brent is the founding and current President of the Council for Canadian Urbanism, Canada's only regular radio columnist on "City-Making" with CBC Radio, a writer for the Huffington Post and many other publications, and a highly sought-after international collaborator, speaker & teacher on advanced urbanism.



## WE ARE PLEASED TO PLANT TREES

In Honour of the Delegates of the 2016 Latornell Conference

Toronto: 416.646.1193  
Toll Free: 1.877.646.1193  
info@forestsontario.ca  
www.forestsontario.ca





# DAY TWO

Tour - Watershed Management

Natural Heritage

Stewardship

Agriculture

W3A LOBBY

W3B-1 ROOM 1

W3C ROOM 19

W3D ROOM 9

## Tour of City of Barrie's Surface Water Treatment Plant and Wastewater Treatment Plant

Join us for a tour of Barrie's Surface Water Treatment Plant where treatment consists of primary screening, flocculation, membrane filtration, granular activated carbon contactors and disinfection with chlorine gas. Afterwards, we will visit Barrie's wastewater treatment plant, the only wastewater treatment plant serving Barrie which dates to c. 1911. The plant has grown to a capacity of 76 MLD utilizing the activated sludge process as its basis but is supplemented with rotating biological contactors for nitrogen removal and sand filtration for effluent polishing. The plant uses a variation on the conventional aeration process - the "UNOX" process - which uses pure cryogenic oxygen as a source of oxygen rather than atmospheric oxygen provided by blowers.

\*Please wear safety shoes for this tour\*

Martin Shaw  
(City of Barrie)

## Hitting Ontario's Targets: Visualizing Success for Natural Heritage and Protected Areas [Part 1]

The Ontario Biodiversity Council is taking aim at two of Ontario's Biodiversity Strategy targets: (1) Develop and implement natural heritage systems plans and biodiversity conservation strategies; and (2) Conserve at least 17 per cent of terrestrial and aquatic ecosystems. The workshop will assess progress, identify roadblocks and explore how to achieve success.

**Part 1 - Moderator**  
Caroline Schultz  
(Ontario Nature)

**Part 1 - Panel**  
**Regional and Municipal Best Practices for Natural Heritage Systems Planning**  
Josh Wise  
(Ontario Nature)

**Natural Heritage Systems - from Maps to Plans**  
Ken Towle  
(Ganaraska Region Conservation Authority)

**Why We Need Provincial Led Natural Heritage Systems Planning**  
Victor Doyle  
(Ontario Ministry of Municipal Affairs)

**Establishing Functioning Ecosystems Across Highly Diverse Landscapes**  
Jarmo Jalava  
(Carolinian Canada Coalition)

## Stewardship Strategies for Green Infrastructure

Partnerships are a key factor for success when it comes to growing green infrastructure in your community. In this session you will learn about the diverse perspectives offered by stewardship practitioners on how they are achieving success, building partnerships and gathering funding opportunities to support landscape level green infrastructure projects in their communities.

**Moderator**  
**Great Lakes Guardian Community Fund**  
Faith Sayavong  
(Ministry of Environment and Climate Change)

**Presentations**  
**A Landscape Approach to Green Infrastructure**  
Suzanne Barrett  
(Stewardship Network of Ontario)

**Grow Your Legacy - An Integrated Strategy for Expanding Green Infrastructure**  
Kyle Heeley  
(The Regional Municipality of York)

**Panel**  
**Rural Perspective**  
Mari Veliz  
(Ausable Bayfield Conservation Authority)

**Urban Perspective**  
Kent Rundle  
(Conservation Halton)

**Shoreline Perspective**  
Holly Shipclark  
(Kawartha, Naturally Connected)

## Innovative Farmers Panel

This interactive session will cover relevant questions such as: What farming practices do I use, what's important to me, what challenges do I face and the big question - what am I going to try next?

**Facilitator**  
Melisa Luymes  
(Farm & Food Care Ontario)

**Panel**  
Andy VanNiekerk  
(Director - Innovative Farmers Association of Ontario)

Jim Patton  
(Director on Innovative Farmers Association of Ontario Board)

2:00 PM - 5:00 PM

# WEDNESDAY • November 16, 2016

## Communications & Marketing

W3E ROOM 11

### Marketing Science - Environmental Visual Communication

Solutions to long-term sustainability are not found solely in the realm of science. Environmental visual communication is an emerging field and its practitioners are key leaders who, through collaboration and deliverables, can build bridges between science and society. The ultimate goal is to motivate the public to care about and become active participants in sustaining our ever-changing world. Short, powerful narratives using video, design elements, online campaigns, and photographic portfolios will inspire you to consider your own work through a new lens.

#### Faculty

Dave Ireland,  
Josh Feltham,  
Stacey Lee Kerr,  
Brett Forsyth,  
Brennan Caverhill,  
and Vincent Luk  
*(Royal Ontario Museum / Fleming College)*

#### Students

Camille Tremblay  
Beaulieu,  
David Coulson,  
Filip Szafirowski,  
Jaime Kearnan,  
Marlaine Munroe,  
Matthew Brocklehurst,  
Paul Esposti,  
Rhi More,  
Shannon Murray,  
Teghan Dodds,  
Temira Bruce,  
Tiffany Moore,  
Sally McIntyre,  
and Samantha Stephens  
*(Royal Ontario Museum / Fleming College)*

## Stormwater

W3F ROOM 2

### Strategies and Tools for Building Green Infrastructure Today

Join us as we explore ways to maximize the success of green infrastructure initiatives through collaborative opportunities between communities, municipalities and conservation authorities. Public perceptions, novel policies and innovative mechanisms will be reviewed.

#### Public Perceptions of LID

Tracy Patterson  
*(Freeman and Associates)*

#### Soak It Up! Strategies for Local Implementation of Green Stormwater Infrastructure

Alix Taylor  
*(Green Communities Canada)*

#### The Grid Approach to LID

Kyle Vander Linden and Bill Trenouth  
*(Credit Valley Conservation)*

#### Achieving Wide Scale Adoption of Green Infrastructure through Public/Private Partnerships

Phil James  
*(Credit Valley Conservation)*

## Green Economy

W3G ROOM 18

### Valuing Ecosystem Services

#### Please note session takes place from 2:00 PM - 3:30 PM

This session will draw from different cases of ecosystem service valuation in the Greenbelt, York Region and Lake Erie to explore how people use natural capital, how effects on natural capital affect economic and overall welfare of people, and how forest canopy data is applicable beyond just forest management.

#### Natural Capital Valuation of Ontario's Greenbelt 2016

Thomas Bowers and Jeff Wilson  
*(Friends of the Greenbelt Foundation)*

#### The Cost of Doing Nothing

Brad Bass  
*(Environment Canada)*

#### Urban Forest Study: Quantifying a Range of Benefits

Phil Davies and Gary Grewal  
*(Lake Simcoe Region Conservation Authority)*

## Mentorship

W3H ROOM 21

### Rethinking Career Development: Stories and Lessons Learned from Green Professionals

Professional development is an ongoing commitment, and mentorship opportunities exist which allow us to develop new skills and learn from friends and co-workers at various stages of their – and our own – careers. Join us for this interactive session where we will explore some of the tools which exist to jump-start and reinvigorate careers, provide insight into the hiring process and share real-world stories about the benefits of two-way learning between senior practitioners and junior staff. Unique ways to develop leadership, interpersonal and other 'soft' skills will be explored.

#### Accelerating Your Career in Conservation

Gregg McLachlan  
*(Work Cabin)*

#### Mutual Mentorship

Katherine Wallace  
*(University of Toronto)*

#### Leadership and Career Development

Andrew Kett  
*(Credit Valley Conservation / YCP)*



# DAY TWO

## Natural Heritage

## Green Economy

W3B - PART 2 ROOM 1

W4G ROOM 8

### Hitting Ontario's Targets: Visualizing Success for Natural Heritage and Protected Areas (Ontario Biodiversity Strategy) [Part 2]

Please note session takes place from 3:30 PM - 5:00 PM

The Ontario Biodiversity Council is taking aim at two of Ontario's Biodiversity Strategy targets: (1) Develop and implement natural heritage systems plans and biodiversity conservation strategies; and (2) Conserve at least 17 per cent of terrestrial and aquatic ecosystems. The workshop will assess progress, identify roadblocks and explore how to achieve success.

#### Part 2 - Moderator

Mark Stabb  
(Nature Conservancy of Canada)

#### Part 2 - Panel

The Status of Protected Areas in Ontario  
Rob Davis  
(Ministry of Natural Resources and Forestry)

What May Count As "Other" Protected Lands  
Graham Bryan  
(Canadian Wildlife Service)

The Bigger Picture - Connecting Protected Spaces  
Dan Kraus  
(Nature Conservancy of Canada)

How We Move Ahead  
Anne Bell  
(Ontario Nature)

### Socioeconomics of Parks, Trails & Natural Heritage

Please note session takes place from 3:30 PM - 5:00 PM

This session will explore strategies to increase support for conservation land, urban meadows, green space, nature reserves and parks through demonstrating the socioeconomic benefits of their conservation, as well as income generating practices to help cover costs of public ownership.

#### Native Meadows as Urban Infrastructure

Stefan Weber  
(St. Williams Nursery & Ecology Centre)

#### Securing Parks and Trails: Enhance Economy, Tourism and Community Benefits

Robert Orland  
(Orland Conservation)  
and Wayne Terryberry  
(Ontario Trails Council)

Income Generation from Conservation Land: A Review from North America  
Kate Potter  
(Orland Conservation)



## Shirley den Houdyker Landscape

Over 30 years of design and construction experience, serving the GTA region. Let us show you what we're about!

[www.sdhlandscape.com](http://www.sdhlandscape.com)

Tel: 416 254-8913 Email: [Shirley@sdhlandscape.com](mailto:Shirley@sdhlandscape.com)

We take pride in our projects and we are committed to providing quality in all aspects of our work from discussion through to design, construction and service.

3:30 PM - 5:00 PM



# LATORNELL GALA BANQUET EVENING

Join us for our annual Latornell Gala Evening. The evening includes a student poster display and competition, dream auction, grand prize card draw, banquet dinner and finishing with our lively Wednesday night entertainment.

## STUDENT POSTER DISPLAYS AND COMPETITION 4:30 PM - 6:30 PM

The Latornell Conservation Symposium showcases a variety of original research projects which have either been just completed or are underway within our universities and colleges. This is a great opportunity for Symposium delegates to see innovation in action and to provide their feedback to student poster participants. A vote is held by delegates and cash awards of \$500, \$300 and \$200 are presented to the top three poster presentations. This event is sponsored by R.J. Burnside & Associates Limited.



This year, a total of 19 presenters are featured. They include:

NAME	AFFILIATION	POSTER PRESENTATION
<b>Iftekjarul Alam</b>	Ryerson University	Building a geospatial database for assessing effects of multiple stressors on Ontario inland lakes
<b>Daina Anderson</b>	University of Waterloo	Deciphering the quacks: Exploring the differences in avian community composition in restored and natural wetlands
<b>Colin Ash</b>	Ryerson University	Geostatistical modeling of landscape drivers of in-stream chloride concentrations across a gradient of urbanization
<b>Scott Cafarella</b>	University of Guelph	Exploring urban open space system planning in Ontario: Challenges in managing Ontario's urban green infrastructure
<b>Scott Gardner</b>	University of Guelph	A conceptual framework for modeling nitrate contamination and transport in southern Ontario
<b>Elen Lemaitre-Curri</b>	Carleton University	Payments for Ecosystem Services: taking social networks, distributive impacts, and trust into account
<b>Joshua MacDougall</b>	University of Guelph	Evaluating retrievals of soil moisture from C-Band SAR to changes in vegetation across two growing seasons
<b>Dan Marshall</b>	Wilfrid Laurier University	Quantifying relationships between phosphorus availability and mycorrhizal associations in inundated conditions
<b>Rachael Marshall</b>	University of Guelph	First Nations' source water protection: A traditional and technical knowledge collaboration
<b>Pamela Martin</b>	University of Toronto	Management applications of vegetation composition as monitoring criteria
<b>Kevin McNaughton</b>	Georgian College	Effects of sodium chloride on iron water main
<b>Ryan Osman</b>	University of Guelph	A water budget study for agricultural production
<b>Dorian Pomezanski</b>	University of Guelph	Amphibian tunnel usage patterns in a Guelph suburb
<b>Nicole Radulovic</b>	Georgian College	Abundance & distribution of visible and microplastic debris on high and low traffic beaches of Lake Simcoe
<b>Shoaib Saleem</b>	University of Guelph	Nitrate occurrence in groundwater in southern Ontario: A review
<b>Heather Schibli</b>	University of Guelph	Bioregional design for multiple aggregate extraction site rehabilitation in the Oak Ridges Moraine, Ontario
<b>Kirti Sehgal</b>	University of Toronto	Slow the flow: How green is our grey?
<b>Tim Skuse</b>	University of Toronto	A new agent for the biological control of invasive knotweeds: The psyllid <i>aphalara itadori</i>
<b>Stephanie Worrone</b>	University of Guelph	Rural water and wastewater system management: A look to the north



## DAY TWO

### LATORNELL GALA BANQUET EVENING

#### **DREAM AUCTION 4:30 PM - 8:00 PM**

The Dream Auction provides a variety of items bound to appeal to everyone in the crowd. It's a perfect opportunity to start your Christmas shopping with many one-of-a-kind items available.

#### **There are two ways to take home a great item:**

- » Silent auction – how high will you go.....?
- » Bucket Draw – 1 ticket for \$2; 3 for \$5; an arm length of tickets for \$20

At the Silent Auction there is something for everyone! Entertainment, Family Activities, Booze, Art and Toys. We look forward to having you join us for an evening of fun!

#### **Some of this year's items include:**

- » Toronto Raptors tickets (good ones!)
- » Toronto Maple Leafs tickets (also good ones!)
- » Family camping adventures
- » 4 Tickets to the National Ballet of Canada "the Nutcracker" December 13, 7 PM
- » Nottawasaga Inn weekend getaway package
- » ROM Family Membership
- » Niagara Wine tastings
- » Long Point Eco Adventures Zipline and Canopy tour
- » Books, prints, gift cards, wine, scotch, food, maple syrup... and much more!

And much more!

#### **Donated by:**

All Dream Auction items are generously donated by individuals and organizations with a passion for conservation. All proceeds to be donated to the Latornell Grant Fund.

Thank you to everyone who help make this such a success. The "Dream Auction" supports our bursary program providing financial aid to people who would not otherwise be able to attend this annual Symposium. With over **\$12,000 raised at last year's auction**, our awards will enable students and/or representatives of smaller environmental non-government organizations to attend this year's Symposium.

**Thinking of making a donation for the 2017 Symposium?** Please contact Freyja Whitten, Credit Valley Conservation, [fwhitten@creditvalleyca.ca](mailto:fwhitten@creditvalleyca.ca)

## LATORNELL GALA BANQUET EVENING

### GALA BANQUET DINNER & ENTERTAINMENT 6:30 PM – 9:30 PM

The Latornell Gala Banquet is held on the Wednesday evening during the Symposium. A number of events take place during the Gala Banquet, such as the Student Poster Display and Competition, the Dream Auction, Banquet Dinner, and it is capped off with an Entertainment Performance. In years past, delegates have shared a laugh with Jessica Holmes, Derek Edwards, The Second City; drummed along with Drum Café; and participated in a trivia game show with Matt O'Brien.

The Latornell Conservation Symposium is excited to announce **The Debaters** as the 2016 Latornell Gala Banquet entertainment.



**The Debaters** is the hit show where comics go toe to toe in a battle of laughs and logic. Hosted by Canada's Best Male Standup of 2011 and 2013, Steve Patterson, **The Debaters** is a combustible mix of sharply crafted comedic rants and hilarious adlibs. It is part stand-up, part quiz show and part comedy competition with the audience picking the winners.

Live at Latornell this year, comedians Graham Chittenden and Jon Steinberg will be debating the age-old question; **Zombies VS Climate Change: Which is the worst apocalyptic scenario?** One comedian will serve as advocate; the other comedian will take the contrary view. The audience will ultimately decide who won the debate, based on a mix of "funny and fact", by applauding for the performer they thought did the best job. The comedian that gets the loudest round of applause wins.

There are four rounds to the debate: the first allows the comedian to state their position on the issue, which is followed by the "bare-knuckle round" where the two debaters spar with each other directly. This is followed by the "firing line" round where the host quizzes the debaters on their knowledge of the subject (where they can either provide the correct or most amusing answer), concluded by a one-minute summation. The live audience then votes by applauding for who they thought had the best combination of "laughs and logic".





## FARM TO TABLE

### FOOD, GLORIOUS FOOD - FROM THE FARM TO THE TABLE



In keeping with our green philosophy we have been working with the Nottawasaga Inn, our venue, to promote Ontario local food sources. The Nottawasaga Inn has been extremely helpful and has worked hard with us to ensure that many of the menu items included are Ontario locally grown produce & farm raised products. We are proud to be able to say that the Latornell Conservation Symposium Steering Committee and the Inn will continue to provide our traditionally plentiful and varied menus, while at the same time supporting local growers and reducing our impact on the environment.

**Check out the sample of local food that are part of our daily menus.**

LOCAL FOOD	SOURCE FROM
Peppers	Kingsville
Red and White Potatoes	Simcoe and Alliston
Sweet Potato	Blenheim
Corn	Leamington
Bean Sprouts	Bradford
Broccoli	Exeter
Gold Beets	Newcastle
Butternut Squash	Bloomfield
Country Smoked Ham	Huron County
Apples for pies	Thornbury
Mushrooms	King City
Kale	Bradford
Carrots	Holland Marsh
Mixed Beans	Delhi
Tomatoes	Grimsby
Scallions	Otterville
Beef	Penetanguishene
Brussel Sprouts	Pottageville
Parsnips	Unionville
Pears	Thornton
Onions	Holland Marsh
Baby Carrots	Campbellville
Butter	Alliston Creamery
Bread and Buns	Alliston Bakery

## GREENING INFORMATION

### PLANTING TREES ON BEHALF OF SYMPOSIUM PARTICIPANTS BENEFITS THE ENVIRONMENT

Over 6,000 trees will be planted in the Nottawasaga Valley watershed to help offset the emissions created by participants travelling to the Latornell Conservation Symposium. This unique partnership between Forests Ontario, the Nottawasaga Foundation, the Nottawasaga Valley Conservation Authority, and the Symposium has planted over 43,000 trees since 2006.

In addition to offsetting emissions, planting trees increases forest cover, improves water quality, moderates the effects of flooding and drought, prevents erosion and provides habitat for wildlife. Trees are also an important natural economic resource. The Symposium is providing a \$5,000 grant which is matched by the Nottawasaga Foundation and provided to Forests Ontario who works with the Nottawasaga Valley Conservation Authority to plant the trees.



### LATORNELL GREEN BITES – WALKING THE TALK

The Latornell Conservation Steering Committee (SC) is doing its part to reduce our carbon footprint and combat climate change in organizing your annual Symposium:

- More and more use of teleconferences for SC meetings, subcommittee meetings and projects!
- Sharing of information, including reports, background material, meeting agendas and minutes and conference guidelines, between SC members using a special members' page on the website!
- Sharing ideas between SC members on a live webpad on the members' webpage!
- Implementing conference promotion and registration electronically!
- Promoting the electronic submission of applications for sponsors, exhibitors, grants and Leadership Awards!
- Encouraging local foods to be served at all meals during the Symposium!
- Ensuring 4,000+ trees are planted annually to offset carbon dioxide emissions resulting from travel to and from the Symposium!

These efforts, and more, are helping to:

- reduce SC travel to and from meetings to organize the Symposium;
- reduce the use of paper in our work; and,
- accept carbon responsibility and reduce our imprint on the planet!



# DAY THREE

## Watershed Management

### TH1A ROOM 15

#### **How Great are the Lakes? Improving Water Quality Monitoring, Modeling and Assessment**

Great Lakes challenges include nutrient loading, algal blooms, and impacts on drinking water, resource-based industries, and habitat. Lessons learned from this session will address three aspects of assessing Great Lakes water quality: monitoring protocols and plans, modelling tools, and condition assessments.

#### **Evaluating the Spatial Distribution of Phosphorus in the Middle Grand**

Thadsha Chandrakumaran  
*(University of Waterloo)*

#### **Modeling and Monitoring Needs to Understand Nutrient Dynamics from Land to Lake**

Amanjot Singh  
*(Credit Valley Conservation)*

#### **Implementing a Monitoring Protocol for the Great Lakes Nearshore Area**

Aleksandra (Ola) Panczyk  
*(Nottawasaga Valley Conservation Authority)*

## Natural Heritage

### TH1B ROOM 1

#### **Lessons from Ontario's UNESCO Biosphere Reserves**

Biosphere Reserves are recognized by the United Nations Educational, Scientific and Cultural Organization. This session will explore and highlight how Ontario biosphere reserves are working together through partnerships with Indigenous communities, industry partners, and diverse agencies to successfully address issues of sustainability while connecting people to the benefits of the biosphere.

#### **Biosphere Reserves 101: Connecting People to the Benefits of the Biosphere**

Lisa Grbinicek  
*(Niagara Escarpment Commission)*

#### **Partnership Based Vegetation Monitoring: Re-Inventory of the Niagara Escarpment Biosphere Reserve**

Danijela Puric-Mladenovic  
*(Ministry of Natural Resources and Forestry)*

#### **Eco-centric Land Use Planning as a Watershed Scaled Approach to Green Infrastructure: Future Directions for the Georgian Bay Biosphere Reserve**

Kendall Flower  
*(Georgian Bay Land Trust)*

## Stewardship

### TH1C ROOM 19

#### **Work Smarter, Not Harder: Tools of Stewardship**

Busy Stewardship Practitioners always seem to be doing more with less these days. Fortunately there are new "tools" being created that help to prioritize projects and ensure that scant time and resources are maximized to get the most "bang for the buck" out of every initiative.

#### **Stewardship Priorities and Opportunities Tool - Identifying and Prioritizing Stewardship Opportunities in the Lake Simcoe Watershed**

Bill Thompson  
*(Lake Simcoe Region Conservation Authority)*

#### **Developing a Stream Stewardship Database**

Dylan Radcliffe  
*(Radcliffe Environmental Consulting)*

#### **Embracing WebGIS: A Look at How Dillon Consulting Uses WebGIS to Improve Operational Efficiency**

Paul Barker  
*(Dillon Consulting)*

8:30 AM - 10:00 AM

## Tours

### TH1D LOBBY

#### **Sustainability at York Region's Bill Fisch Forest Stewardship and Education Centre**

Tour starts at 8:30 AM and returns at 1:00 PM.

Join us as we take a ride in style (coach bus) to tour the Bill Fisch Forest Stewardship and Education Centre ([www.vimeo.com/141227639](http://www.vimeo.com/141227639)), located at the Hollidge Tract in Whitchurch-Stouffville.

The building is pursuing Living Building Challenge certification, a sustainable building certification achieved by only 11 buildings in the world to date! The education centre's green features include a target of net zero energy and water use. Through solar panels, the building is expected to generate more energy than it uses on an annual basis! Presentation on-site will focus on green building design, sustainable forest management, accessible trail design, afforestation and prairie restoration at York Region's Bendor and Graves forest tract. Please dress appropriately for a short hike in the forest afterwards.

A packed lunch will be served on the return bus trip – please advise [info@latornell.ca](mailto:info@latornell.ca) of any food allergies upon registration.

.....  
 Barb Davies  
*(The Regional Municipality of York)*

We would like to acknowledge York Region as the Bill Fisch Forest Stewardship and Education Centre tour sponsor.



## EcoHealth

### TH1E ROOM 21

#### **Ecohealth Policy Toolkit: Realizing the Benefits of Green Infrastructure for Human Health and Wellbeing**

Join us for a workshop on how we can use green infrastructure – including parks, trails, conservation areas, schoolyards and greener neighbourhoods – to benefit health and wellness, both physical and mental. EcoHealth Ontario will present a draft policy toolkit and participants will provide feedback and contribute their own examples of innovative work to incorporate health and wellness benefits into green infrastructure.

.....  
 Noah Gaetz  
*(Toronto and Region Conservation)*

Suzanne Barrett  
*(EcoHealth Ontario)*

Karen Wiannecki  
*(Planning Solutions)*

Morgan Levison  
*(Simcoe Muskoka District Health Unit)*

Mike Puddister  
*(Credit Valley Conservation)*

## Stormwater

### TH1F ROOM 2

#### **Stormwater Management in Rural Watersheds - Challenges and Solutions**

With a special focus on rural watersheds, this session will examine climate change trends and the associated effects on stormwater quality, and will provide recommendations for addressing degraded water quality from agricultural land uses through the use of emerging technologies and strategies.

#### **Precipitation and Climate Change Trends in the Upper Thames River Watershed**

Dr. Imtiaz Shah  
*(Upper Thames River Conservation Authority)*  
 and Yun Xia  
*(Western University)*

#### **Implementing and Assessing Targeted Agricultural Stewardship**

Karen Jacobs  
*(Ontario Soil and Crop Improvement Association)*

#### **Reducing Phosphorus Loss From Farmland Through Improved Water Management and Drainage in the Thames River Basin**

Nicola Crawhall  
*(Great Lakes and St. Lawrence Cities Initiative)*



# DAY THREE

## Watershed Management

TH2A ROOM 15

### **The River's Rising: Monitoring, Mapping and Flood Control**

The management of data, monitoring, and the role of climate change is critical in considering floodplain management and flood control. This session will provide an overview of the importance of a monitoring network, updating floodplain mapping using current information, and the role of storm water management in flood control.

### **Enhancement of a Real-time Hydrometric Network to Support Flood Warning/Vulnerability Initiatives**

Tim Kuntz  
*(Credit Valley Conservation)*

### **Floodplain Mapping under Changing Environmental Conditions – A Case Study from Nova Scotia**

Juraj Cunderlik  
*(GHD Ltd.)*

### **Flood Storage, an Integral Part of Green Infrastructure**

Wilfred Ho  
*(Toronto and Region Conservation)*

## Natural Heritage

TH2B ROOM 1

### **Natural Heritage System Tools and Planning**

Connected natural heritage systems support the protection and development of green infrastructure. This session first provides an overview of natural heritage systems planning responsibilities, tools and opportunities. This is followed by a case study highlighting lessons learned regarding the development of a natural heritage system through the ongoing work of Kawarthas, Naturally Connected.

### **Natural Heritage Systems Planning Tools**

Michael Wynia  
*(Skelton, Brumwell and Associates Inc.)*

### **Lessons from Natural Heritage System Planning in Peterborough and the Kawarthas**

Amanda Warren  
*(Kawarthas, Naturally Connected)*

## Stewardship

TH2C ROOM 19

### **Low Cost/Low Tech: Solutions for Farm Water Runoff**

WASCoBs and biofilters are low tech solutions to protecting rural water quality. This session will present research and results implementing these solutions on farms in the Ausable-Bayfield, Upper Thames and Lake Simcoe watersheds.

### **Improving Agricultural Runoff Water Quality with WASCoBs**

Ross Wilson  
*(Ausable Bayfield Conservation Authority)*

### **Biofilters to Treat Agricultural Runoff I: Woodchips**

Dr. Will Robertson  
*(University of Waterloo)*

### **Shrimp Shell Biopolymers and Red Sand, Hybrid Materials for Attenuating Soluble Phosphate Generated by Agricultural Activity**

Dr. Bulent Mutus  
*(University of Windsor)*

10:30 AM – 12:00 PM



## Tours

### TH2D LOBBY

#### **Sustainability at York Region's Bill Fisch Forest Stewardship and Education Centre**

##### ***Continuation of TH1D***

Tour starts at 8:30 AM and returns at 1:00 PM.

Join us as we take a ride in style (coach bus) to tour the Bill Fisch Forest Stewardship and Education Centre ([www.vimeo.com/141227639](http://www.vimeo.com/141227639)), located at the Hollidge Tract in Whitchurch-Stouffville. The building is pursuing Living Building Challenge certification, a sustainable building certification achieved by only 11 buildings in the world to date! The education centre's green features include a target of net zero energy and water use. Through solar panels, the building is expected to generate more energy than it uses on an annual basis! Presentation on-site will focus on green building design, sustainable forest management, accessible trail design, afforestation and prairie restoration at York Region's Bendor and Graves forest tract. Please dress appropriately for a short hike in the forest afterwards.

A packed lunch will be served on the return bus trip – please advise [info@latornell.ca](mailto:info@latornell.ca) of any food allergies upon registration.

.....  
Barb Davies  
*(The Regional Municipality of York)*

## EcoHealth

### TH2E ROOM 21

#### **Using Green Infrastructure to Battle Skin Cancer**

Skin cancer is the most common cancer in Ontario and represents one third of all new cancer cases. Providing built and natural shade (created by a healthy tree canopy) is universally acknowledged as an essential tool for skin cancer prevention, while providing other co-benefits such as mitigating the urban heat island effect and stormwater management. This session will look at how to achieve effective shade through planning, policy, and design.

.....  
**Skin Cancer Prevention Through Designing for Shade (Part 1)**

George Kapelos  
*(Ryerson University)*

**Skin Cancer Prevention Through Designing for Shade (Part 2)**

Sheila Boudreau  
*(City of Toronto)*

#### **'Partners in Action' / Toronto Shade Policy Video**

## Stormwater

### TH2F ROOM 2

#### **Adapting Communities to a Changing Climate**

Join us as we celebrate the successes surrounding how LID technologies are being incorporated into community designs for flood resiliency, and how they are helping to reduce the costs of stormwater management.

.....  
**Climate Adaptation: Key Considerations for Building Flood-Resilient Communities in Canada**

Natalia Moudrak  
*(Intact Centre on Climate Adaptation)*

**Naturescaping- A Community-Led Revolution in the Design of Stormwater Systems**

Hilary Van Welter  
*(ReWilding Lake Simcoe)*  
and Mitch Harrow  
*(Ontario Water Centre)*



# DAY THREE

## THURSDAY LUNCHEON PROGRAM

12:00 PM - 1:00 PM || LUNCH AND NETWORKING

### You Talked! We Listened!

Latonnell is known to be a fast paced, always something-happening, kind of conference. We sincerely hope that from every session, workshop, tour and keynote presentation you attend, you will be inspired. We also hope that you will take what you have learned back with you to share with your colleagues and friends.

Another mission of Latonnell is to ensure that you have plenty of opportunities to benefit from the third element of this conference – networking! We would like to welcome you to the Thursday Networking Luncheon. Face to face conversations, otherwise known as networking the old-fashioned way!

Social media platforms are excellent ways to communicate, but are no substitution for eye contact, intonation, and a firm handshake. Networking is about making connections and building enduring, mutually beneficial relationships – whether you are reconnecting with old colleagues or meeting new contacts.

Introduce yourself, ask a question, seek to understand and see where the conversation takes you.

Step  
Into Nature



270  
Conservation Areas  
to Explore



Search for Conservation Areas, Trails, and Events at

[www.ontarioconservationareas.ca](http://www.ontarioconservationareas.ca)

**THURSDAY** · November 17, 2016

## CONTINUE LEARNING AFTER THE SYMPOSIUM

Visit the Latornell Conservation Symposium website after the event to download speaker presentations (as available) and resource materials on the Conference theme.

We also provide links to Exhibitors' websites where you can find more information on their products and services. Visit [www.latornell.ca](http://www.latornell.ca)

**Stay Informed!** Receive our e-blasts throughout the year informing you of updates and deadlines.

Just go to the Symposium website ([www.latornell.ca](http://www.latornell.ca)), click on Contact Us and fill out the Mailing List Subscription Form. If you want to join the Twitter conversation, follow our Twitter feed @ADLatornell and add the hashtag #latornell to your tweets.



# Recruit Guelph

- Offering environmental sciences & engineering co-op students **year-round!**
- Our students can assist you with a variety of projects including: storm drainage, solid waste reduction, policy development, SOP & technical writing, environmental modelling, biomonitoring, R&D, sample preparation & much more.
- Get the help your organization needs. Students available starting **January 2017** or **May 2017**.

[www.recruitguelph.ca](http://www.recruitguelph.ca)

Post your job today!

(519) 824-4120 x52323



# DAY THREE

## Watershed Management

TH3A ROOM 18

### Managing Expectations: Balancing Perceptions, Risks, and Costs in Modified Rivers

River and stream channels have often been engineered, and more recently are being rehabilitated, to address flood and erosion risks and protect nearby infrastructure and habitat. This session will explore how space, costs, uncertainty, and the perceptions of industry and the public are competing factors influencing the design and management of these systems.

### Expectations and Uncertainty in the Long-Term, Self-Maintenance of Managed Geomorphic Systems

Roger Phillips  
*(Western University)*

### Buried Secrets Exposed within Toronto's River Valleys

Rob Amos  
*(Aquafor Beech)*

### Freedom Space for Rivers: An Economical Approach to Sustainable Management in a Changing Climate

Joanna Eyquem  
*(AECOM)*

## Natural Heritage

TH3B ROOM 1

### Urban Forests

Urban forests are the backbone of a community's green infrastructure system. They require the support of healthy soil systems and provide many benefits to communities, including stormwater management, improved air quality, and reduced temperatures. Learn about how urban forest features, including soils, are being managed and protected.

### Mississauga's Woodlot Report Card: an Online Map and Database Tool for Woodlot Management

Jamie Ferguson and Sarah Pielt  
*(City of Mississauga)*

### Toronto's Ravine Strategy - A Framework for Protecting and Managing Vital Green Infrastructure

Kim Statham  
*(City of Toronto)*

### The Case for Improved Soil Management during Urban Construction

Chris Morrison  
*(StormWaterForestry Company)*

## Stewardship

TH3C ROOM 19

### Agricultural BMPs: It's Not the Science; It's the Sociology

If you don't tailor your message for the audience, even the most incentivized BEST Management Practices won't get implemented. This session explores how to effectively deliver programs specific to the farming community.

### A New Approach to Agricultural Extension

Melisa Luymes  
*(Farm & Food Care Ontario)*

### Success and Lessons Learned of the GRCA's Rural Water Quality Program

Louise Heyming  
*(Grand River Conservation Authority)*

### Improving Farmland Through Written Farmland Agreements

Jacqui Empson Laporte  
*(Ontario Ministry of Agriculture, Food and Rural Affairs)*

1:15 PM - 2:45 PM

## Tours

### TH3D ROOM 11

#### **Being Green at the Nottawasaga Inn**

Join us for a tour of the Nottawasaga Inn to learn about the facility's 4 Green Key rating. The hotel has multiple programs in place that involve management, employees, guests and the public, which have shown substantial and measureable results. Environmental programs on-site focus on water conservation, energy and waste reduction. Hear how heat from refrigeration equipment is harnessed through heat plate exchangers and used to heat the outdoor pool, greatly reducing energy consumption. See how tertiary treated effluent from 1800 homes is recycled at the private sewage treatment plant on-site and used on the golf course, significantly reducing water needed for irrigation. Through its wide-ranging policies and practices, the Nottawasaga Inn has shown national industry leadership and commitment to protecting the environment.

Peter Biffis  
*(Nottawasaga Inn)*

## EcoHealth

### TH3E ROOM 21

#### **Health and Wellness Through Nature**

Join us for a session on how Green Infrastructure can be a benefit to our overall health and wellness, both physical and mental. From early childhood development, to adulthood, active and passive exploration and enjoyment of Green Infrastructure such as parks, hiking trails, conservation areas, schoolyards and even greener neighbourhoods have been shown to improve our overall health.

#### **Mood Walks: Mental Health & Nature**

Jasmine Ferreira  
*(Canadian Mental Health Association)*

#### **The SNAP Rx: Maximizing the Benefits of Green Infrastructure at the Neighbourhood Scale**

Cathrin Winkelmann  
*(Toronto and Region Conservation)*

#### **Role of Green Infrastructure in Healthy Childhood Development**

Karen Dobrucki  
*(Evergreen and the Toronto District Catholic School Board / Ecoschools)*

## Stormwater

### TH3F ROOM 2

#### **Building Green Infrastructure to Beat Climate Change**

Increasing vulnerabilities within existing infrastructure systems and changes to in-stream water quality are among the impacts of climate changes which have already occurred. This session will explore how real-time water quality monitoring being carried out by CVC is being used to assess these impacts, along with guidance on integrated water management and the tools needed to quantify the benefits of different management options in the face of a changing climate.

#### **Using Continuous Monitoring Technologies as Surrogates to Identify Watershed Vulnerabilities**

Lorna Murison  
*(Credit Valley Conservation)*

#### **One Water Vulnerability Approach to Support Green Infrastructure Alternatives, and Making the Business Case for Green Infrastructure Investment - Municipal Decision Tool**

Alex Lenarduzzi  
*(Credit Valley Conservation)*

#### **Tools Quantifying the Benefits and Life Cycle Costs of Green Infrastructure**

Sakshi Saini  
*(Credit Valley Conservation)*

## THIS EVENT IS



**bullfrogpowered<sup>®</sup>**

**WITH 100%  
GREEN ELECTRICITY**



# DAY THREE

## KEYNOTE ADDRESS AND WRAP-UP

3:00 PM – 4:30 PM || KEYNOTE SPEAKER

**Dr. Avi Friedman**, Professor, School of Architecture,  
McGill University



Dr. Avi Friedman received his Bachelor's degree in Architecture and Town Planning from the Isra Institute of Technology, his Master's Degree from McGill University, and his Doctorate from the University of Montréal.

In 1988, he co-founded the Affordable Homes Program at the McGill School of Architecture where he teaches. He also holds an Honorary Professor position in Lancaster University in the U.K. Dr. Friedman is known for his housing innovation and in particular for the Grow Home and Next Home designs.

He is the author of 18 books and a syndicated columnist for the Postmedia Chain of daily newspapers. He is the principal of Avi Friedman Consultants Inc. and the recipient of numerous awards including the Manning Innovation Award and the World Habitat Award.

In the year 2000 he was selected by Wallpaper magazine as 1 of 10 people from around the world "most likely to change the way we live."

# WATER CANADA

THE COMPLETE WATER MAGAZINE



The only magazine dedicated to the entire Canadian water industry.

Reach the decision makers in key markets.

**Contact us today.**

[watercanada.net](http://watercanada.net)

## LATORNELL PROFESSIONAL DEVELOPMENT

The Latornell Professional Development Program fosters opportunities for career growth and networking. This year, we are excited to announce the launch of our secure LinkedIn forum – the Latornell Mentorship group – which provides a safe space for mentorship and networking. The Latornell Mentorship group is a welcoming forum where all members have declared their willingness to support professional development opportunities through sharing experiences and advice with others in a variety of formats (social or professional meetups, emails, phone calls, etc.). It is also a hub where current job postings from across Ontario’s environmental and conservation sector are shared. A key strength of the Mentorship Group is that it allows participants to form and pursue the relationships which are most enriching to them. It also allows for varying degrees of engagement, so professional development opportunities suit participant’s schedules.

To request to join the Latornell Professional Development Program, sign up using the link below, and a group moderator will be happy to approve your request to join. And remember - it’s all free! What’s even more exciting is that you will be able to connect with people beyond the Latornell Community in other sectors. Join us now at [www.linkedin.com/groups/8317800](http://www.linkedin.com/groups/8317800)

There are a couple of great professional development activities at this year’s Latornell Conference including:

1. The **Latornell Grant Recipients Reception** on Tuesday, November 15<sup>th</sup> at 5:30 PM (by invitation)
2. The **Young Conservation Professionals (YCP) Graduation Ceremony** on Wednesday at 12:00 Noon in the Conservation Dome with keynote speaker Brent Toderian
3. Join us on Wednesday, November 16<sup>th</sup> at 2:00 PM for our **professional development session** “Rethinking Career Development: Stories and Lessons Learned from Green Professionals” (W3H)

For more information about the program, visit Latornell’s Professional Development Page at [www.latornell.ca/general-info/professional-development/](http://www.latornell.ca/general-info/professional-development/)

If you have any questions or would like to request access to the LinkedIn Group, please message Bill Trenouth using LinkedIn messenger. The Latornell Professional Development Program can also be reached at [ADLMentorship@gmail.com](mailto:ADLMentorship@gmail.com).

Thank you and we look forward to welcoming you into the Professional Development Program!

-The Latornell Steering Committee.



**LATORNELL**  
CONSERVATION SYMPOSIUM

**MARK YOUR CALENDAR  
FOR THE 2017 SYMPOSIUM  
NOVEMBER 14, 15 AND 16, 2017**

**Nottawasaga Inn Resort & Conference Centre**  
Alliston, Ontario

# 2016 LATORNELL CONSERVATION GRANT

The Latornell Conservation Symposium Grant was established in the memory of Art Latornell to support students and active members of the conservation community so that they may attend this popular event. Funds to support the grants are raised through the Symposium's annual Dream Auction.

Since 2002, a total of 278 people have received a grant. Applicants must be a student (college or university) or affiliated with an Ontario not-for-profit/community conservation organization either as an employee or volunteer.

Recipients receive one – three day or one day registration package, including conference meals, and up to two nights accommodations at the Nottawasaga Inn.

Individuals interested in applying for a 2017 Symposium grant are encouraged to do so at [www.latornell.ca/grants/](http://www.latornell.ca/grants/).

## SUCCESSFUL CANDIDATES OF THE 2016 GRANT PROGRAM

**Muwaffaq Al-Awad**, *Credit Valley Conservation*

**Samantha Crowley**, *Rouge Valley Foundation*

**Claire Danes**, *Muskoka Lakes Association*

**Emily De Cloet**, *Lower Trent Conservation*

**Scott Delyea**, *Ontario Waterpower Association*

**Michelle Desjardine**, *Chippawas of Nawash First Nation*

**Katrina Furlanetto**, *Cataraqui Region Conservation Authority*

**Kirushanth Gnanachandran**, *Riverwood Conservancy*

**Junyan Jessica He**, *University of Guelph*

**Anastasia Kaschenko**, *Green Communities Canada*

**Erin Mallon**, *Conservation Halton*

**Rhi More**, *Royal Ontario Museum / Fleming College*

**Shannon Murray**, *Royal Ontario Museum / Fleming College*

**Ryan Osman**, *University of Guelph*

**Nicole Radulovic**, *Georgian College*

**Shoaib Saleem**, *University of Guelph*

**Sydney Sims**, *University of Melbourne*

**Smera Sukumar**, *Ontario Nature*

**Bernadeta Szmudrowska**, *Credit Valley Conservation*

**Yun Xia**, *Upper Thames River Conservation Authority*





Ontario  
Biodiversity  
Council

Working together  
to protect what sustains us



[ontariobiodiversitycouncil.ca](http://ontariobiodiversitycouncil.ca)

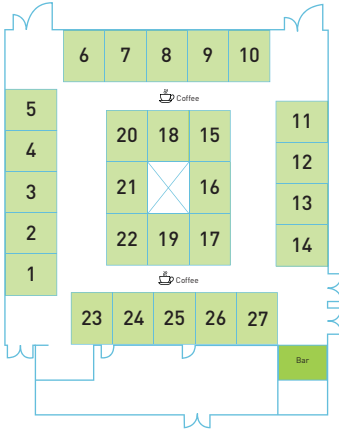
# THIS YEAR'S EXHIBITORS



# EXHIBITOR FLOORPLAN

## EXHIBITOR GALLERY A

### Crystal Ball Room



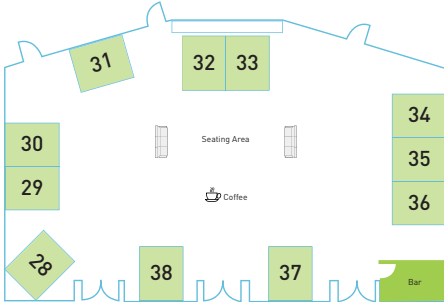
1. Winkelmolen Nursery Ltd.
2. Computational Hydraulics International (CHI)
3. Forterra
4. Ontario Soil and Crop Improvement Association
5. Ontario Geological Survey
6. Ducks Unlimited Canada
7. Brown's Concrete Products
8. Airborne Imaging
9. Forests Ontario
10. Provincial Mapping Unit (Ministry of Natural Resources and Forestry)
11. Natural Resource Solutions Inc.
12. Civica Infrastructure Inc.
13. Hoskin Scientific Ltd.
14. Hoskin Scientific Ltd.
15. GEO Morphix Ltd.
16. FTS and Foundry Spatial Inc.
17. Purus North America Inc.
18. Book this booth next year!
19. The Water Institute — University of Waterloo
20. GHD
21. Ministry of Agriculture, Food and Rural Affairs
22. University of Guelph
23. Ontario Biodiversity Council
24. Aquanty
25. KISTERS North America, Inc.
26. Book this booth next year!
27. Environmental Commissioner of Ontario

## THE GIO GREEN SPACE

### Between Exhibitor Gallery A & B

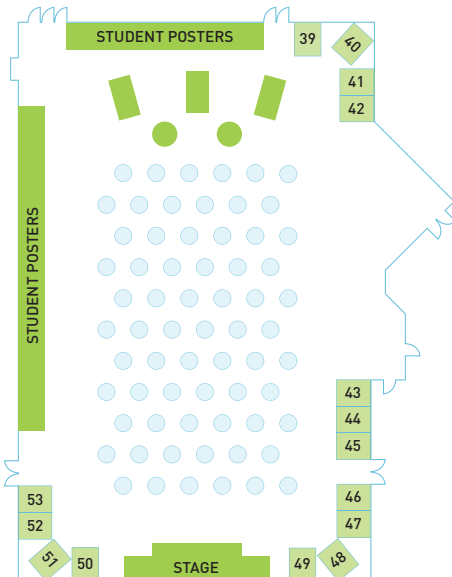
Come enjoy and experience first-hand the many benefits of green infrastructure. The space includes a rain garden and trees, as well as seating where delegates are encouraged to sit back, recharge their batteries and network. This space was provided to you by: *Green Infrastructure Ontario Coalition, Conservation Ontario, York Region's Healthy Forests, Healthy Communities.* Design provided by *Parklane Landscapes*, Greenery provided by *Winkelmolen Nurseries & Somerville Seedlings*. Fire pit & fire ring provided by *Northbound Elements*.

## EXHIBITOR GALLERY B Room 10



28. Skelton, Brumwell and Associates Inc.
29. Book this booth next year!
30. Soleno
31. Verbinen's Nursery Ltd.
32. Ontario Partner Environmental Network (OPEN) Project
33. Conservation Ontario – Drinking Water Source Protection
34. Conservation Ontario
35. Conservation Ontario
36. Ecohealth Ontario
37. Bishop Water
38. Public Services Health & Safety Association

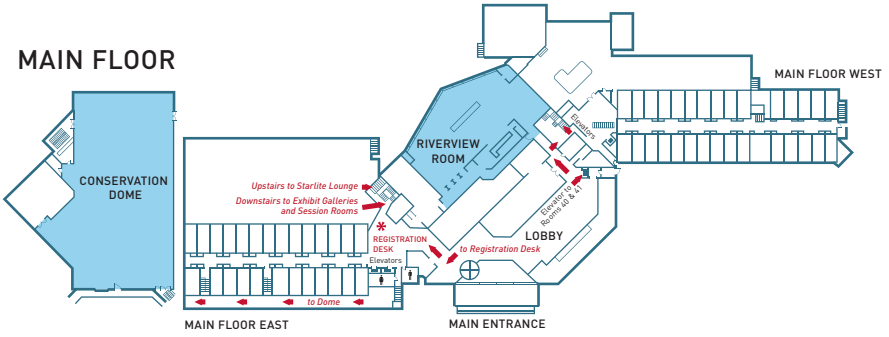
## CONSERVATION DOME



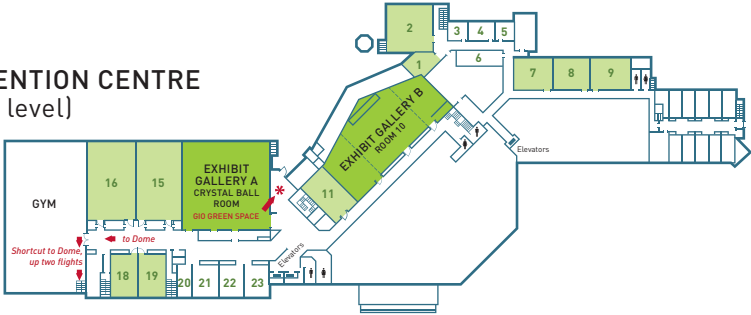
39. Holland Marsh Growers Association (HMGA)
40. Holland Marsh Growers Association (HMGA)
41. Federation of Canadian Municipalities
42. Quality Seeds Ltd.
43. Ontario Municipal Water Association
44. Book this booth next year!
45. Book this booth next year!
46. Allset Inc.
47. University of Toronto – Physical & Environmental Sciences
48. R.J. Burnside & Associates Limited
49. Conservation Ontario
50. Ministry of Natural Resources and Forestry
51. Conservation Ontario
52. Conservation Ontario
53. Ministry of Natural Resources and Forestry – Climate Change

# NOTTAWASAGA INN FLOORPLAN

## MAIN FLOOR



## CONVENTION CENTRE (lower level)



# SESSION INFORMATION

SESSION	ROOM	MODERATOR	SESSION	ROOM	MODERATOR	SESSION	ROOM	MODERATOR
T1A	15	Daina Anderson	W1A	15	Alison Milan	TH1A	15	Alexander Vrban
T1B	1	Alice Lee	W1B	1	Kathleen Law	TH1B	1	Wendy Li
T1C	8	Kira Burger	W1C	19	Alice Lee	TH1C	19	Elen Lemaitre-Curri
T1D	9	Aistin Livingstone-White	W1D	9	Haley Matschke	TH1D	Lobby	
T1E	11	Rachael Marshall	W1E	2	Elen Lemaitre-Curri	TH1E	21	Rachael Marshall
T1F	2	Kirti Sehgal	W1F	11	Rachael Marshall	TH1F	2	Alice Lee
			W1G	18	Alexander Vrban			
T2A	15	Stephanie Worrn	W2A	15	Aistin Livingstone-White	TH2A	15	Alison Milan
T2B	1	Elen Lemaitre-Curri	W2B	1	Rachael Marshall	TH2B	1	Stephanie Worrn
T2C	8	Tim Skuse	W2C	19	Elen Lemaitre-Curri	TH2C	19	Haley Matschke
T2D	9	Alexander Vrban	W2D	9	Kira Burger	TH2D	N/A	
T2E	11	Wendy Li	W2E	11	Kirti Sehgal	TH2E	21	Wendy Li
T2F	2	Kirti Sehgal	W2F	2	Tim Skuse	TH2F	2	Daina Anderson
			W2G	18	Daina Anderson			
T3A	15	Stephanie Worrn	W3A	Lobby		TH3A	18	Kirti Sehgal
T3B	1	Haley Matschke	W3B	1	Stephanie Worrn	TH3B	1	Tim Skuse
T3C	8	Alice Lee	W3B-2	1	Wendy Li	TH3C	19	Kathleen Law
T3D	9	Kathleen Law	W3C	19	Kathleen Law	TH3D	11	Sara Epp
T3E	11	Daina Anderson	W3D	9	Haley Matschke	TH3E	21	Kira Burger
T3F	2	Alison Milan	W3E	11	Aistin Livingstone-White	TH3F	2	Aistin Livingstone-White
			W3F	2	Alison Milan			
			W3G	18	Tim Skuse			
			W3H	21	Alexander Vrban			
			W4G	8	Kira Burger			